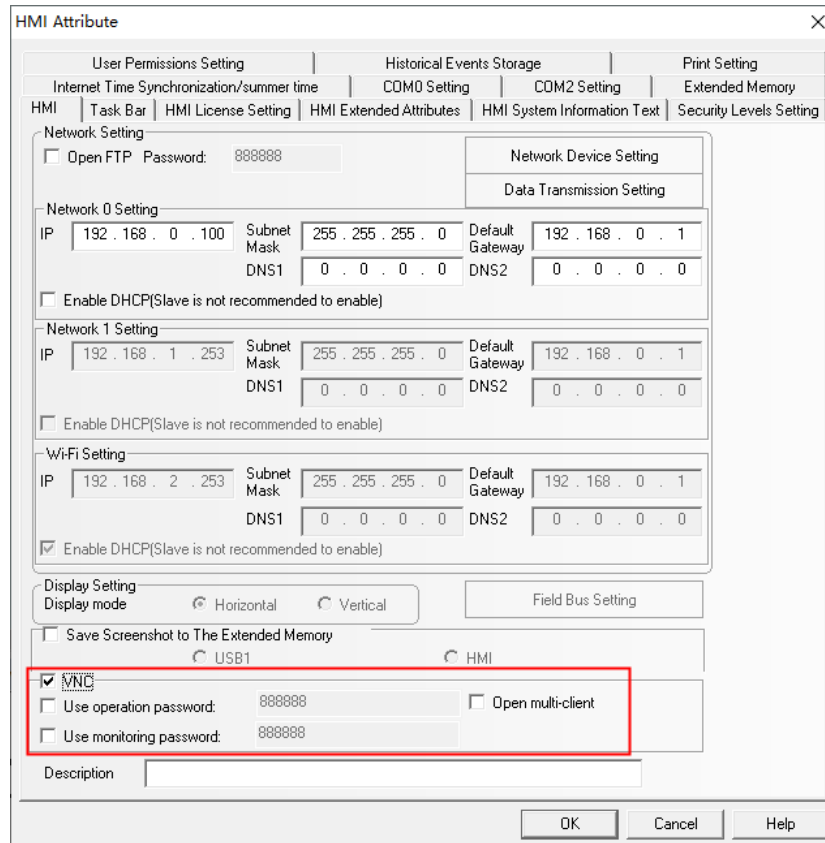


# DTools v3.5.2 new function description

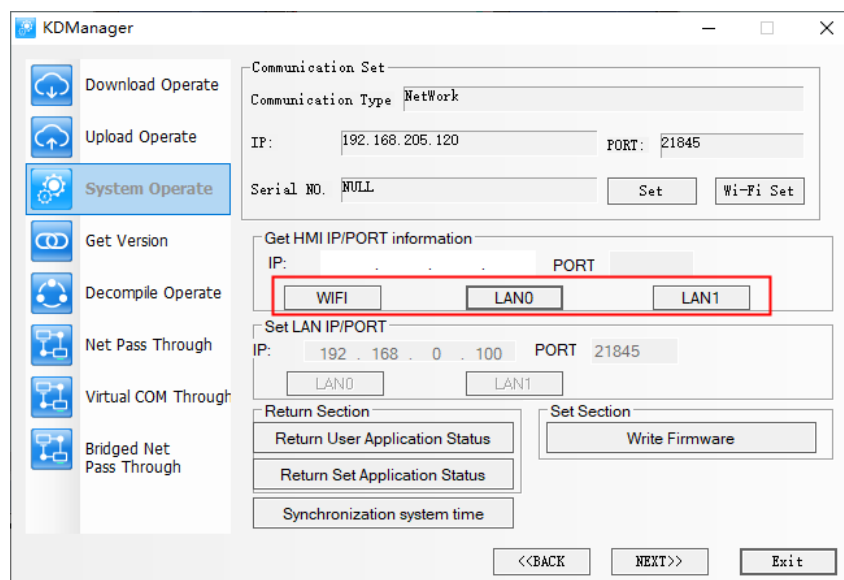
For specific description, please refer to "Kinco DTools User Manual"

## 1 Newly added functions

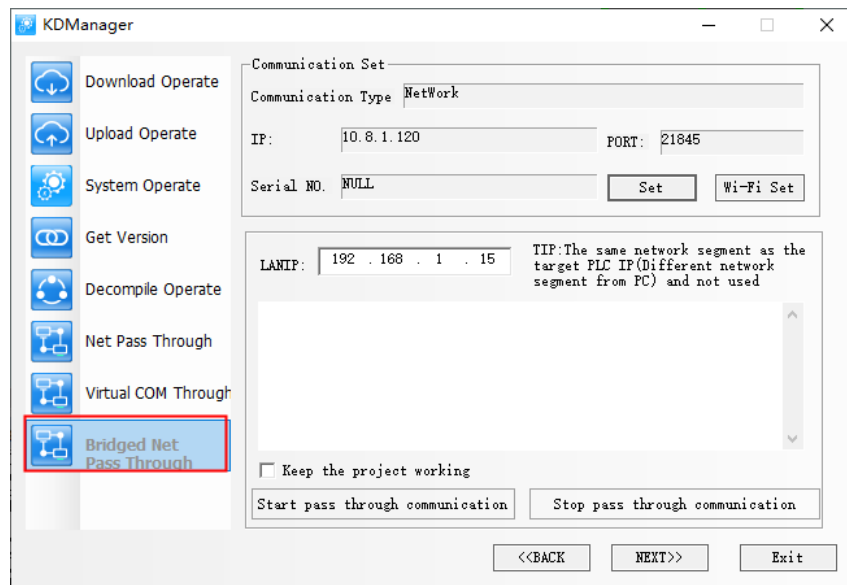
### 1.1 Added VNC server setting function to HMI properties



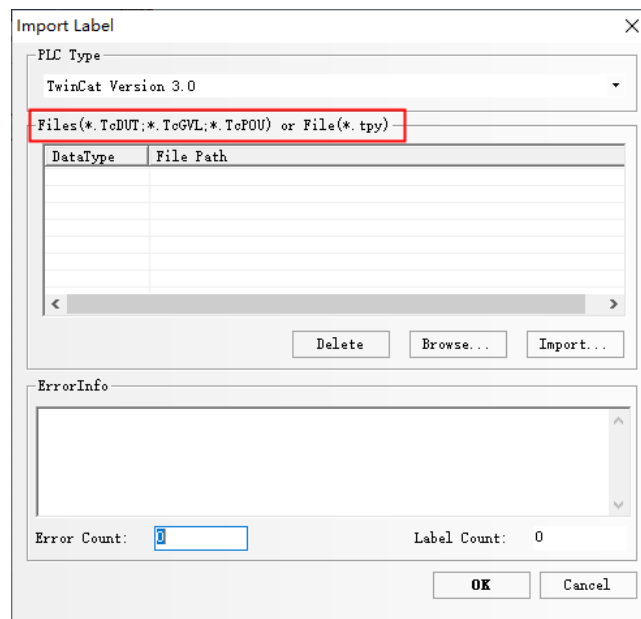
### 1.2 KManager added the function of getting LAN 1, wifi IP



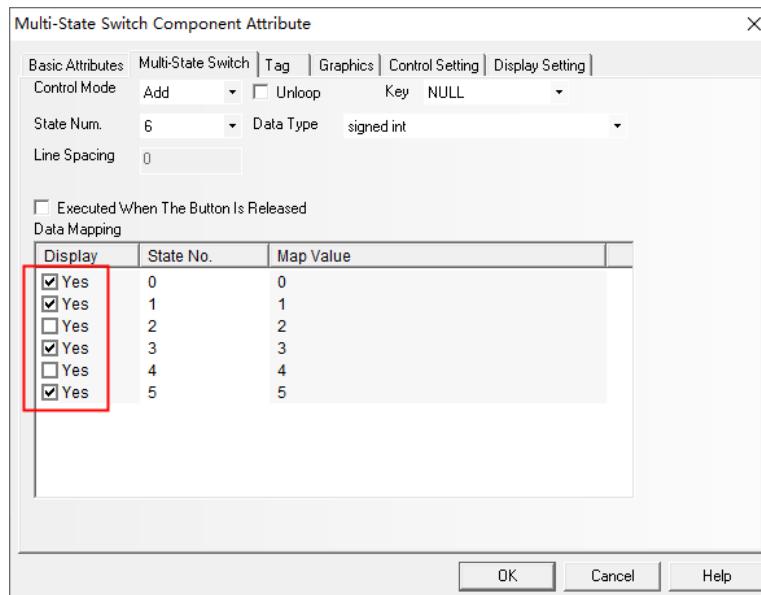
### 1.3 Added Bridged Net Pass Through



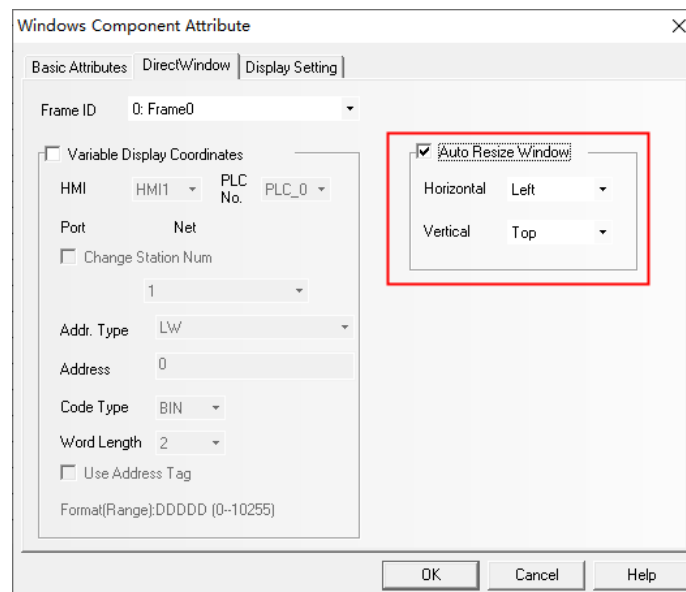
### 1.4 Beckhoff free-tag driver twincat version 3.0, new label file supports importing .tpy type



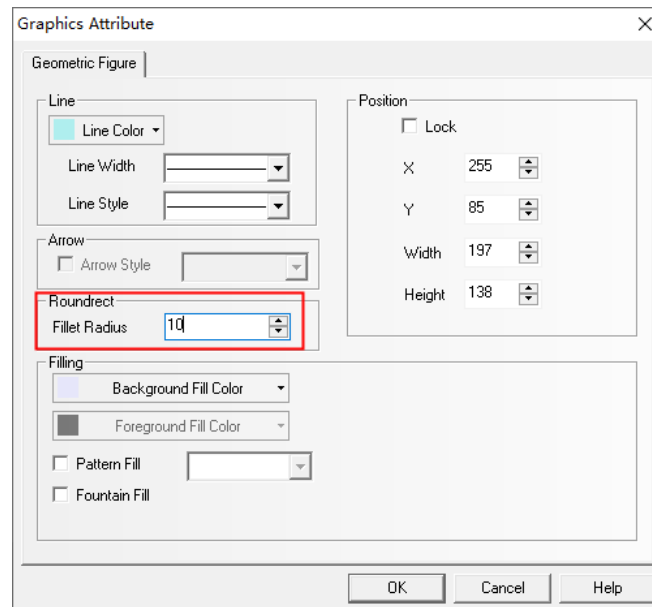
## 1.5 Multiple State switch element added state display function



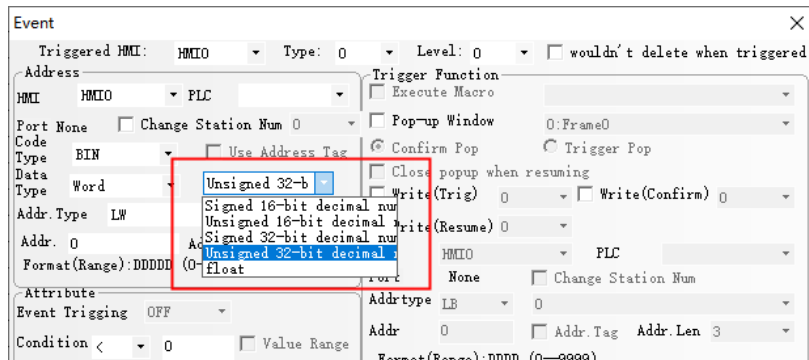
## 1.6 Windows Component added auto resize window function



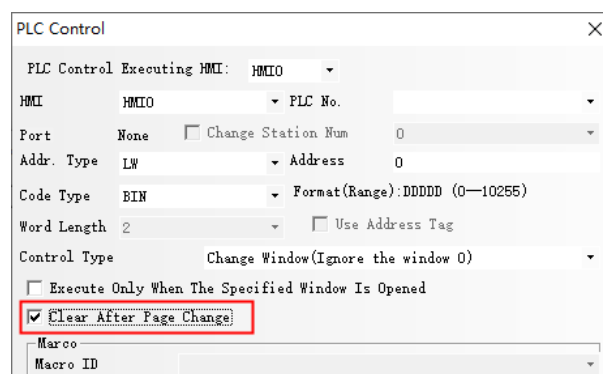
## 1.7 Rounded rectangle added customization fillet radius



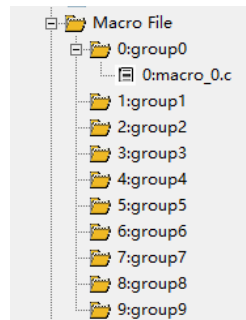
## 1.8 Event information logon support Data type setting



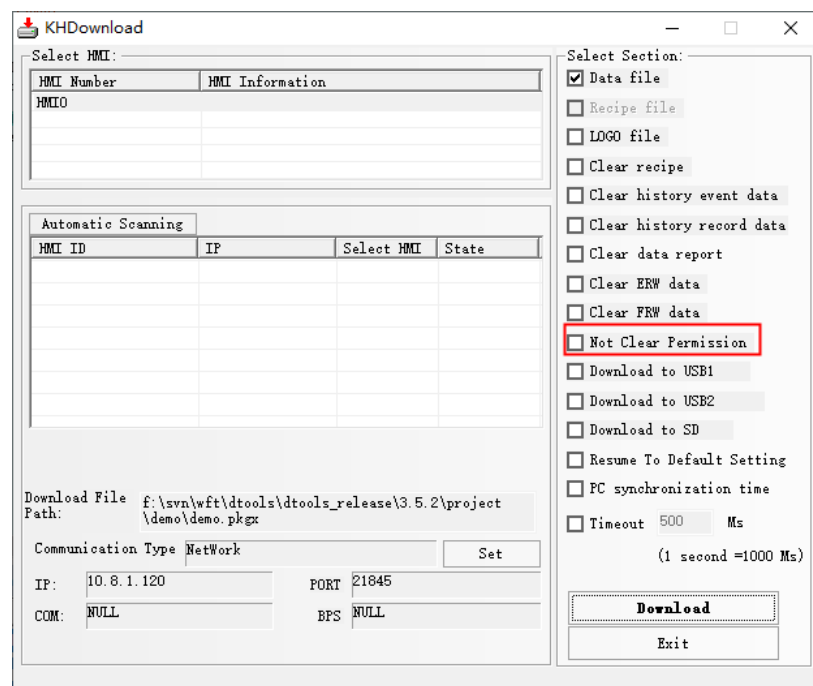
## 1.9 PLC Control change window (Ignore the window 0), added "clear after page change"



## 1.10 Added macro grouping function



## 1.11 Added the function of downloading projects without clearing user permissions



## 2 New added special register

Address	description	Read/Write
LB9170	Set ON, online modify the user authority value	R/W
LB9931	Set ON, the siemens driver double floating point number is displayed normally; set off, the double floating point number is reversed.	R/W

### 4G

Address	description	Read/Write
LW9970~9979	Read SIM card IMEI information	R
LW9980~9989	Read SIM card ICCID information	R

- Mapping of communication parameters

Address	description	Read/Write
LW10234~10237	LAN1 IP address. Each section occupies one word, range 0~255.	R/W
LW.B9614.7	Turn on" ON" LAN1 Open DHCP	R/W
LW10238~10241	LAN1 Gateway. Each section occupies one word, range 0~255.	R/W
LW10242~10245	LAN1 Subnet mask. Each section occupies one word, range 0~255.	R/W

