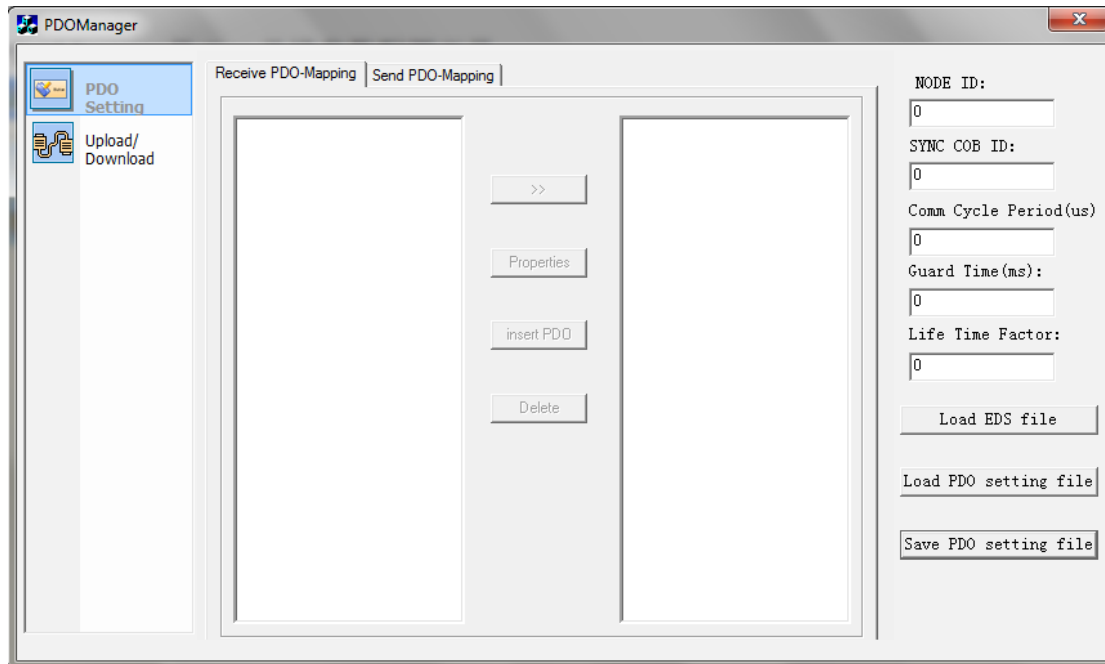


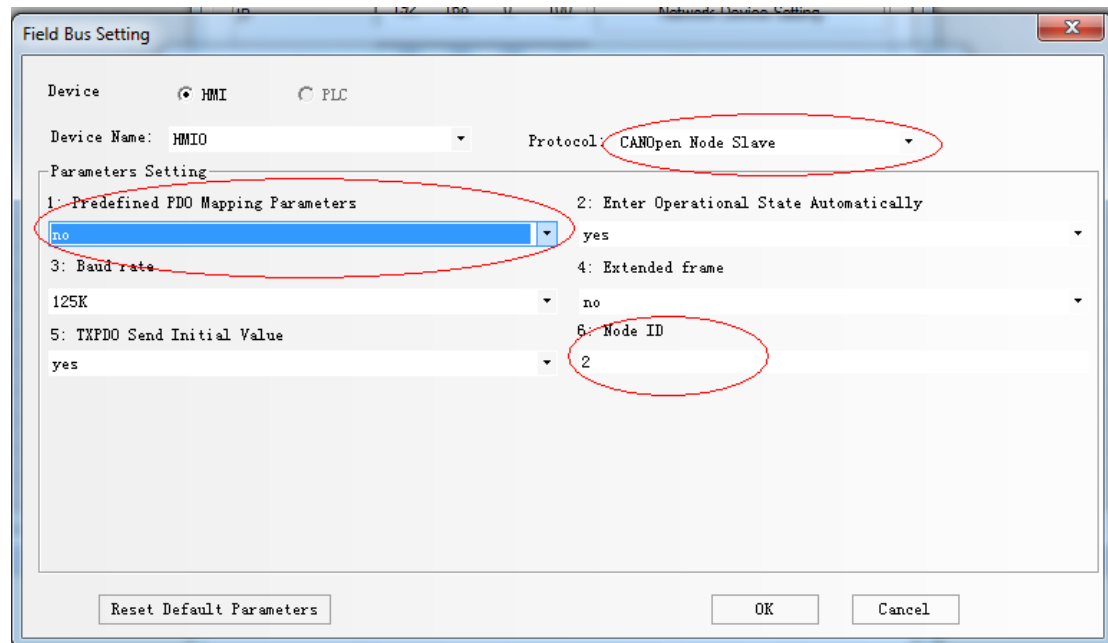
PDOManager User Manual

PDOManager is a parameters configuration software for CAN bus.



This software include two parts: **PDO Setting** and **Upload/Download**.


Fieldbus Configuration in Kinco HMIware Software



The parameter “Predefined PDO Mapping Parameters” must be set as “no”.
“Node ID” must be set according to the actual situation. The range is 1~127.

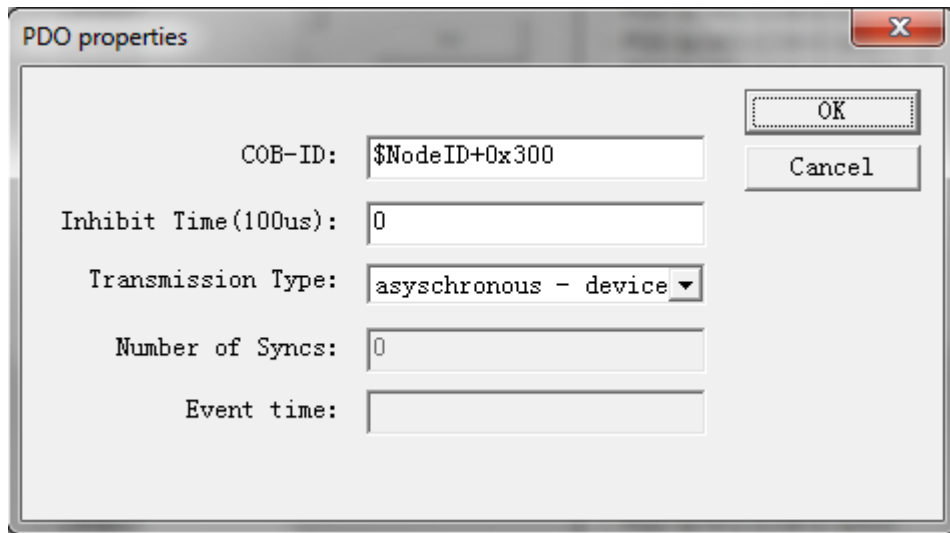
PDO Setting

PDO Setting is used to edit PDO file.

Before editing PDO file, firstly it need to press  to add a EDS file, which is the basic of editing PDO file.

After open a EDS file, then it can start to edit PDO. There are 4 operations for editing PDO as follows.

- (1) Add a new object. 
- (2) Edit the attribute of PDO, press , it will popup following dialog box:



Then edit the attribute of PDO in this dialog box.

(3) Insert PDO

When there is PDO for adding,press this button.

(4) Delete PDO

It can delete the PDO or object.

PDO File Information Edition

NODE ID Setting

NODE ID must be set for PDO file,it is 0 as default.This parameter is used to calculate COB-ID.For example,there is \$NodeID+0x408 in COB-ID,if **NODE ID** is set as 10(Decimal),then COB-ID=0x408+0xa=0x412

Note:NODE ID must be the same as the Node ID in the fieldbus configuration in Kinco HMIware software.

Additionally,there are other parameters like **SYS COB ID,Communication Cycle Period,Guard Time,Life Time Factor** as shown in following figure.

SYNC COB ID:	<input type="text" value="128"/>
Comm Cycle Period(us)	<input type="text" value="0"/>
Guard Time(ms):	<input type="text" value="0"/>
Life Time Factor:	<input type="text" value="0"/>

PDO information includes Receive PDO and Send PDO

Their edition methods are the same.

After finishing edition, then press **Save PDO setting file** to save PDO configuration information, which can generate a PDO file. Meanwhile, users can press **Load PDO setting file** to open the PDO file for editing.

1. Upload/Download

The screenshot shows a software interface titled "Upload/Download". It is divided into three main sections:

- Communication settings:** This section contains three radio buttons: "Ethernet", "USB", and "Serial". The "Serial" option is selected. To the right of the radio buttons, there are input fields for "IP" (containing "192 . 168 . 100 . 241") and "Port" (containing "21845"). Below the radio buttons, there is a "COM:" label followed by a dropdown menu currently showing "COM1".
- Progress:** This section contains a horizontal progress bar.
- Operation:** This section contains a file selection input field, a "Select file" button, a "Download" button, and an "Upload" button.

It can download the PDO file into HMI for CAN bus communication. And it can also upload the PDO file from HMI for edition.

Procedure for download:

(1) Communication Settings

Select connection method. There are 3 optional methods: Ethernet, USB and Serial.

(2) Select PDO file

Press button **Select file** to select the PDO file which you want to download.

(3) Click button **Download** to download the PDO file into HMI.

Procedure for upload:

Click button **Upload**, then enter the name for PDO file and press Save to upload the PDO file from HMI. After finishing uploading, the PDO file can be edited.