



# CATL RFID RTU Slave

## Directory

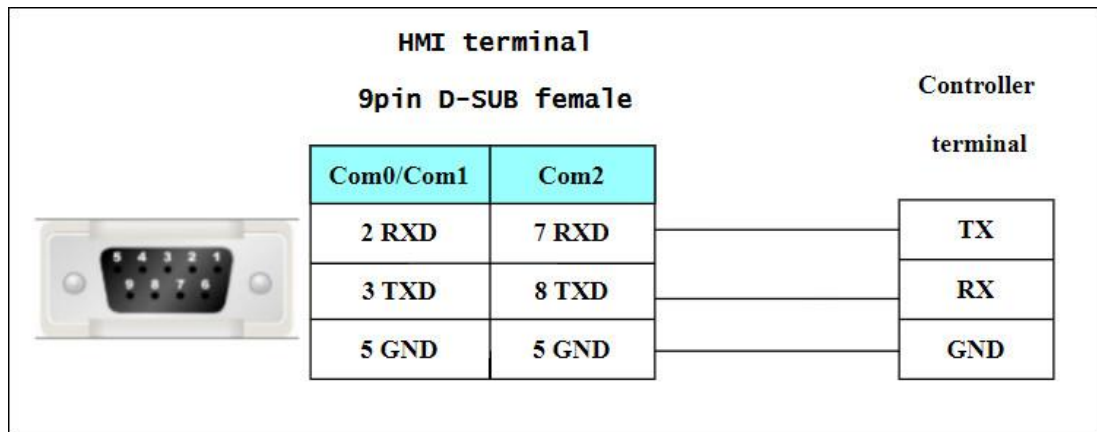
<b>CATL</b> .....	1
❖ 1 Introduction to Driver.....	2
❖ 2 HMI configuration.....	3
❖ 3 Supported registers .....	3
❖ 4 Advanced parameters and error messages .....	3
❖ 5 Software configuration .....	4

## ❖ 1 Introduction to Driver

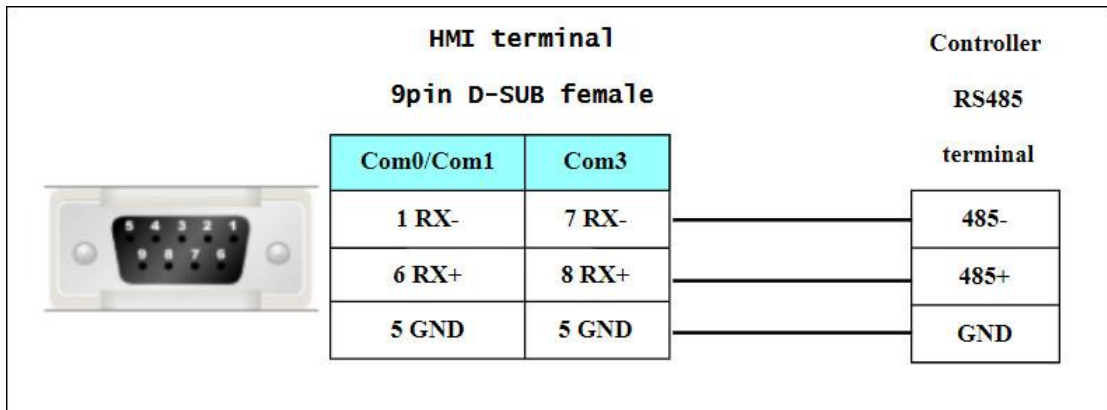
Driver protocol	CATL RFID RTU Slave
Equipment Model	CATL_CATL RFID RTU Slave
Means of communication	RS232、RS485
PLC interface	RS232、RS485
serial port parameter	Default baud rate 115200, data bit 8, stop bit 1, no parity, slave device number 1
Online simulation	unsupported
HMI Model	F1/F2/G2 full series

### Cable Diagram

#### RS232 communication cable

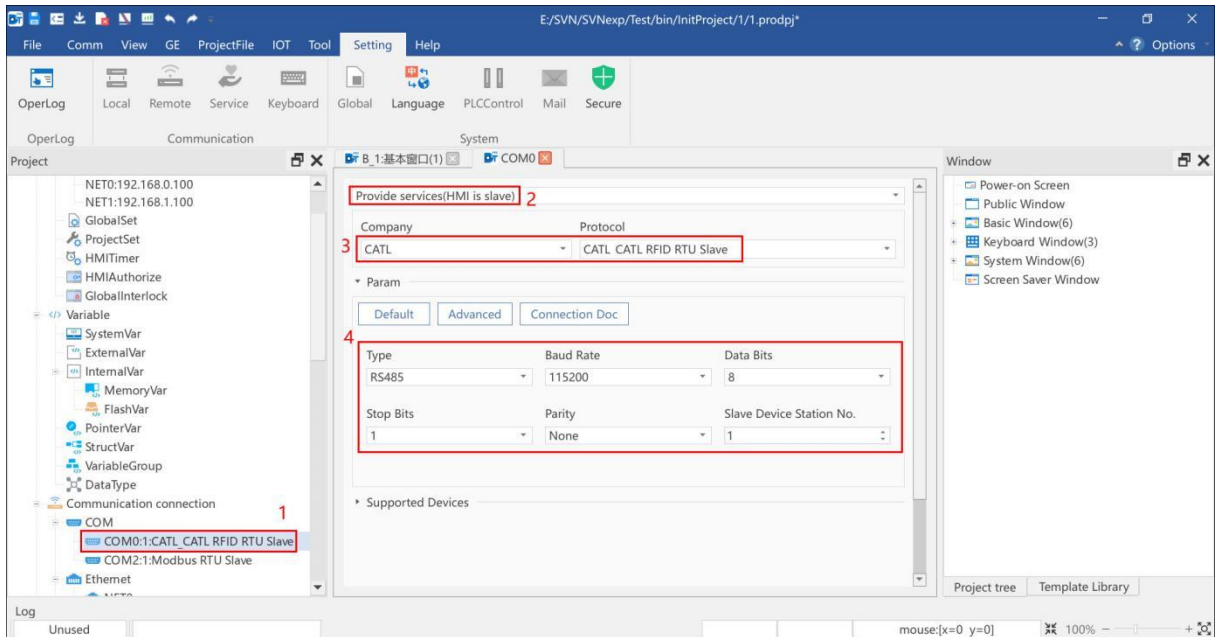


#### RS485 communication cable



## ❖ 2 HMI configuration

➤ configures the communication connection



- (1) Engineering-Communication connection-Serial port, select the serial port to be configured;
- (2) Select "HMI slave device";
- (3) The input field after the word "Company" is to select the manufacturer; the input field after the word "Protocol" is to select the corresponding communication protocol. Here, select the external controller brand CATL, communication protocol selection CATL RFID RTU Slave protocol (if there is no corresponding controller manufacturer, please refer to the manual <<Commonly Used Devices Management>> to configure);
- (4) Set the controller's communication mode, baud rate, parity, data bits, stop bits (to ensure consistency with the parameters of the card reader)

## ❖ 3 Supported registers

Device	Bit Address	Word Address	Format	Notes
SMW	----	SMW String 284	DDD	

Notice

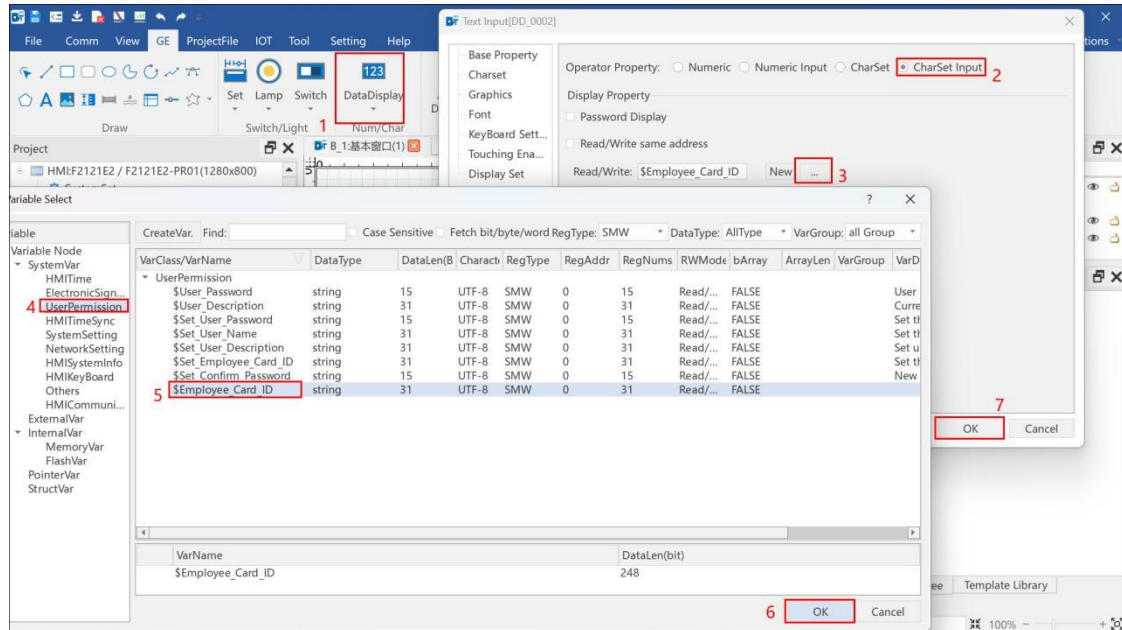
Instructions for use: Read the information by swiping the card and store it in the local register employee card number SMW284.

## ❖ 4 Advanced parameters and error messages

Reference Manual - Newsletter "Advanced Parameters" and "Error Message Table"

## ❖ 5 Software configuration

The steps to use the registers are as follows:



1. Click "Data Display";
2. Select "CharSet Input";
3. Click "...". Enter the variable selection interface;
4. Select the system variables in the "user Permission";
5. Select "\$Employee\_Card\_ID";
6. Click "OK" can be;