

## Inovance H5u/Easy Ethernet(TCP)

### Directory

<b>Inovance</b> .....	1
❖ 1 Introduction to Driver .....	2
❖ 2 HMI Configuration .....	3
❖ 3 External Controller Configuration .....	4
❖ 4 Supported Register Types .....	6
❖ 5 Advanced parameters and error messages .....	6

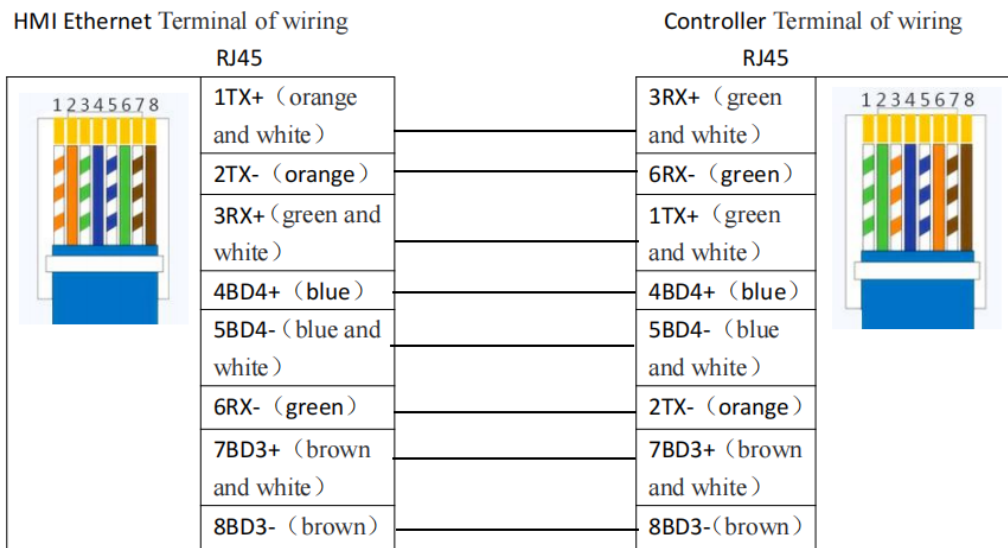
## ❖ 1 Introduction to Driver

Drive Protocol	Inovance H5u/Easy Ethernet(TCP)
PLC Model	Inovance H5u、 Inovance Easy
Means of communication	Ethernet
PLC interface	Ethernet
PLC station number	502
On line simulation	Support
Website	<a href="https://www.inovance.com">https://www.inovance.com</a>

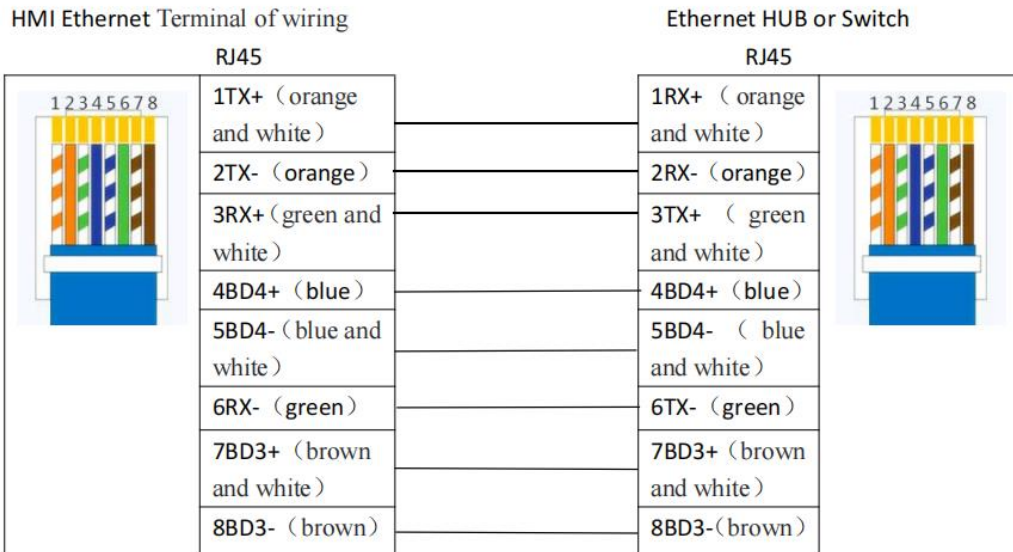
Hardware wiring method:

If the PLC communicates with HMI directly without HUB or SWITCH, crossover cable is used;  
if it communicates with HMI via HUB or SWITCH, either direct or crossover cable can be used.

### A.Crossover cable wiring diagram

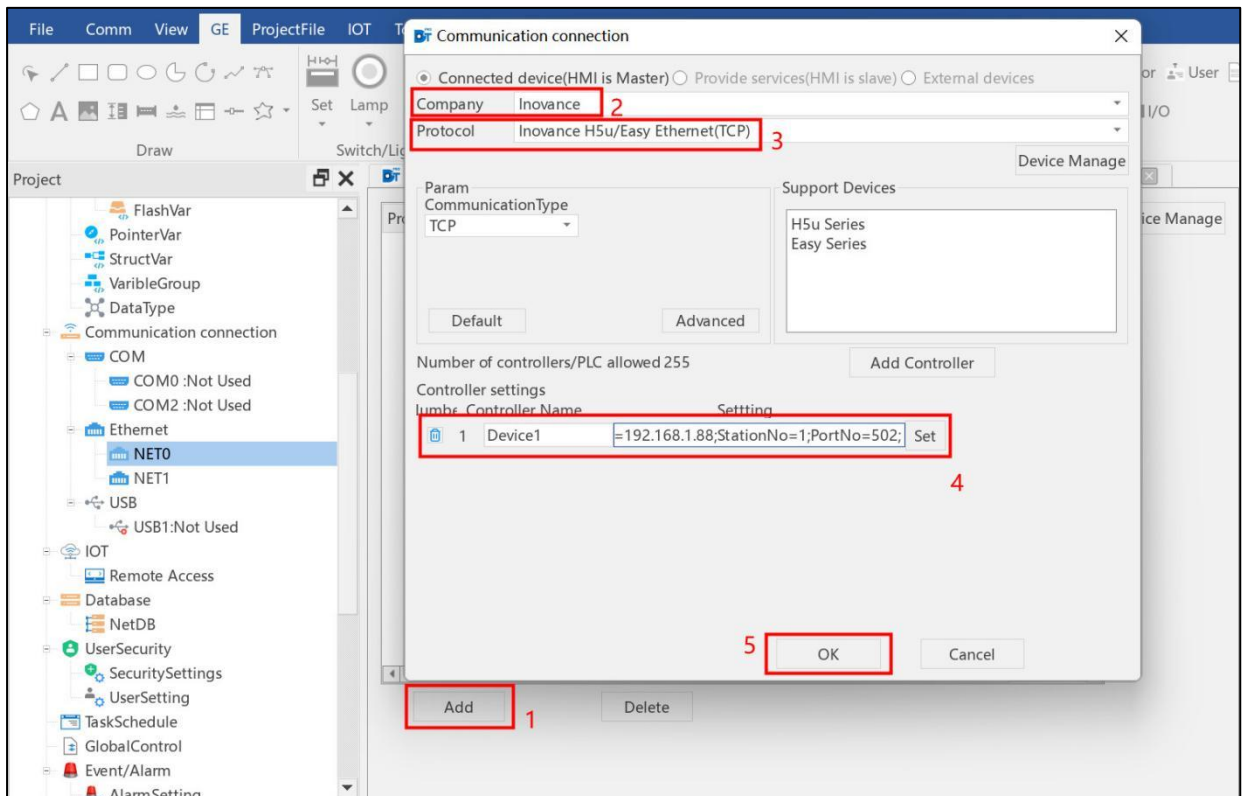


### B.Wiring diagram of the direct cable



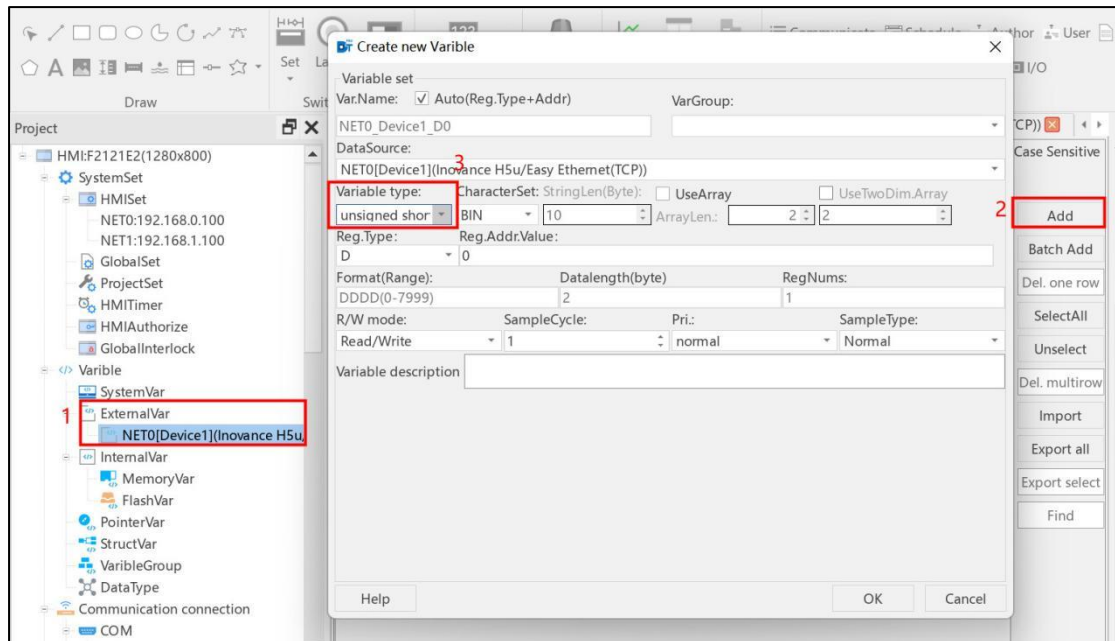
## ❖ 2 HMI Configuration

### ➤ Configuring Communication Connections



1. New connection
2. Choose Inovance brand
3. Select Inovance H5u/Easy Ethernet (TCP) protocol
4. Set the device name and IP address, consistent with the PLC settings
5. OK, complete the configuration

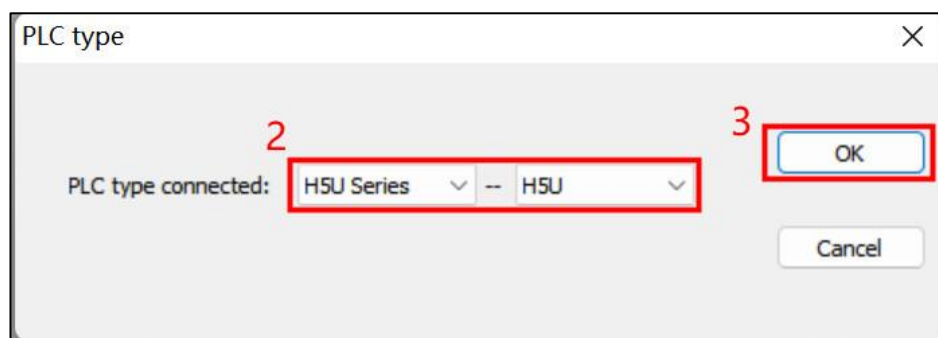
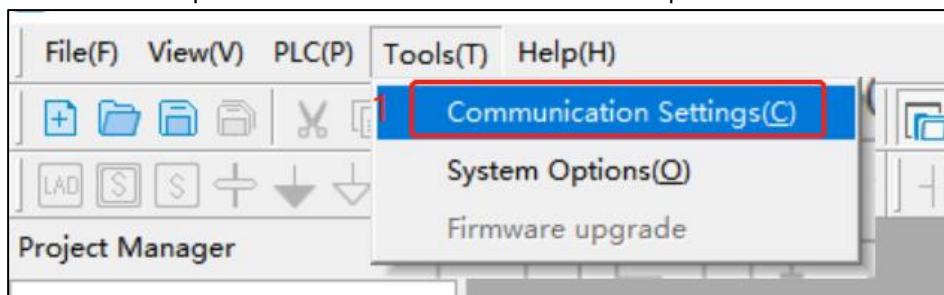
➤ creates variables

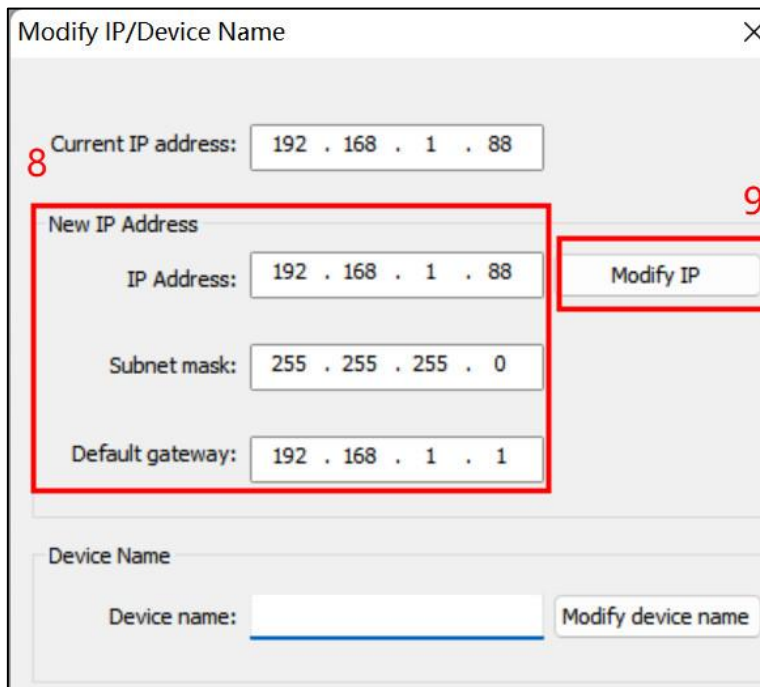
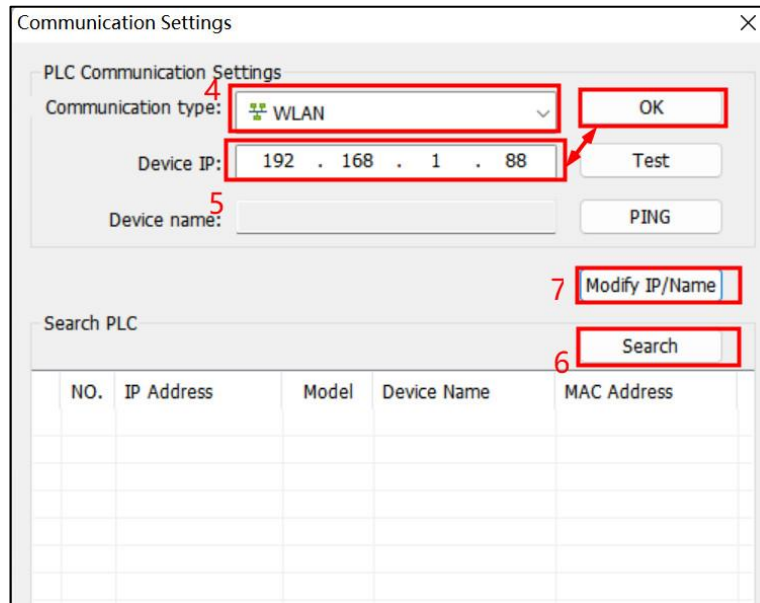


1. Variables - External Variables Select the PLC where you want to create the variable
2. Click Add on the right side to create according to the required data type
3. If you need to create a large number of variables of the same data type, you can select the batch creation shortcut to generate

## ❖ 3 External Controller Configuration

The version of AutoShop software used in this manual is AutoShop V4.2.0.0





1. Open Auto Shop software, click "Tools" --> "Communication Settings".
2. Select plc type as H5U series
3. Click OK to bring up the communication settings
4. Communication type select Ethernet (the name of the network card automatically read by the system)
5. Communication type select Ethernet (the name of the network card automatically read by the system)
6. Correctly enter the IP address, click OK to complete the settings
7. In the case of unknown PLC IP address, you can search for PLC devices through the search function, click the "Search" button to search for H5U connected in the LAN.
8. After connecting the PLC correctly, click the "Modify IP/Device Name" button to enter the

"Modify IP/Device Name" interface.

9. Fill in the "New IP address field" with the new IP, subnet mask and default gateway and click "Modify IP", then re-power the PLC to make the modified IP take effect.

## ❖ 4 Supported Register Types

Device	Bit Address	Word Address	Format	Notes
External input node	X 0-1777	-----	O000	
External output nodes	Y 0-1777	-----	O000	
Internal auxiliary nodes	M 0-7999	-----	D000	
Status Register	S 0-4095	-----	D000	
	B 0-32767	-----	D0000	
Data Register	-----	D 0-7999	D000	
File Register	-----	R 0-32767	D0000	

## ❖ 5 Advanced parameters and error messages

Reference Manual - Communication "Advanced Parameters" and "Error Messages Table"