

# Inovance

## Inovance H5u

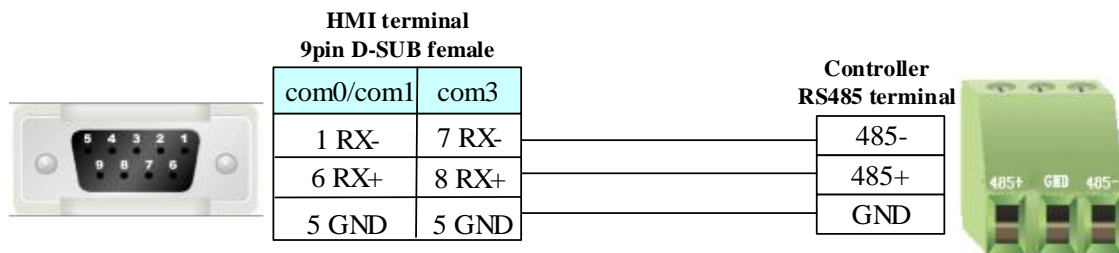
### Directory

<b>Inovance</b> .....	1
❖ 1 Introduction to Driver.....	2
❖ 2 HMI Configuration.....	2
❖ 3 External Controller Configuration.....	3
❖ 4 Supported Register Types.....	5
❖ 5 Advanced parameters and error messages.....	5

## ❖ 1 Introduction to Driver

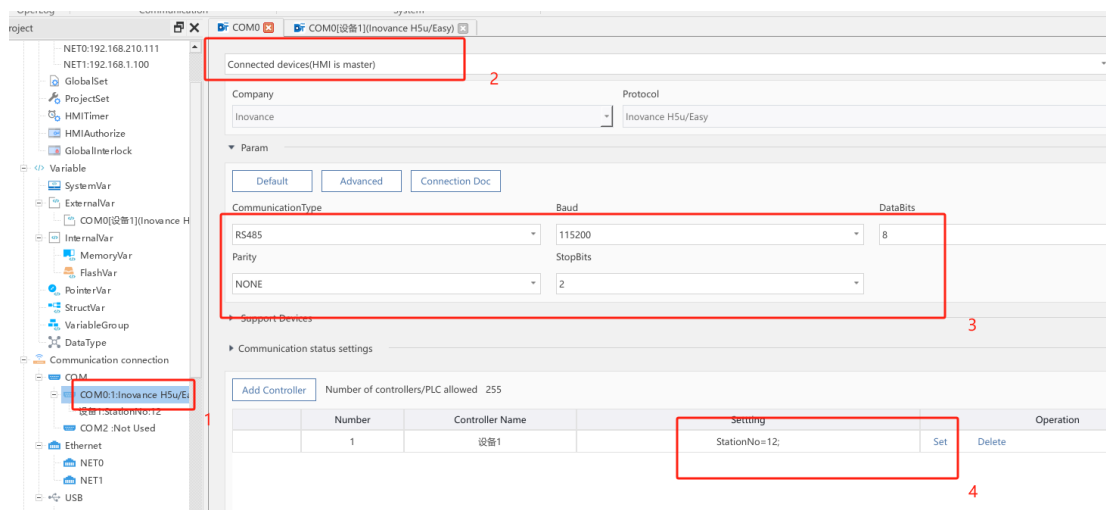
Drive Protocol	Inovance H5u/Easy
PLC Model	H5U Series, Easy Series
Website	<a href="https://www.inovance.com">https://www.inovance.com</a>
Means of communication	RS232、RS422、RS485
PLC interface	RS232、RS422、RS485
PLC station number	1
On line simulation	Support

### RS485 Cable



## ❖ 2 HMI Configuration

### ➤ Configuring communication connections



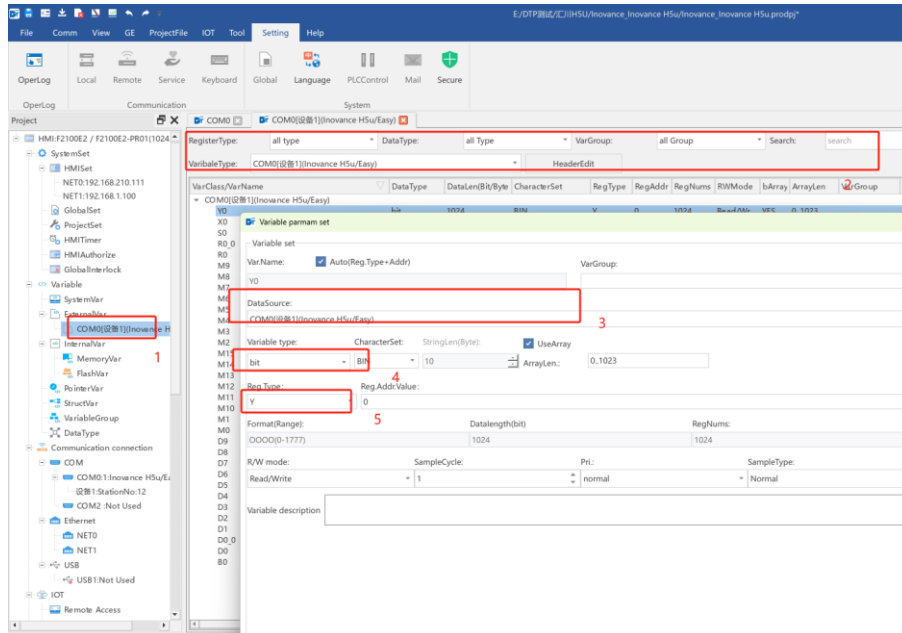
- (1) Project - communication connection - serial port, select the serial port to be configured;
- (2) The input field after the word "Company" is to select the manufacturer; the input field after

the word "Protocol" is to select the corresponding communication protocol. The external controller brand Inovance is selected here (if there is no corresponding controller manufacturer, please refer to the manual <<Common Device Management>> for configuration);

- (3) Selection of the Inovance H3u protocol for the communication protocol;
- (4) Setting the controller's baud rate, parity, data bits, and stop bits;
- (5) Set the StationNO of the controller, click OK to configure the communication connection, if you do not see the OK button in the communication connection window, please use the mouse to scroll down the screen.

➤ Add variable

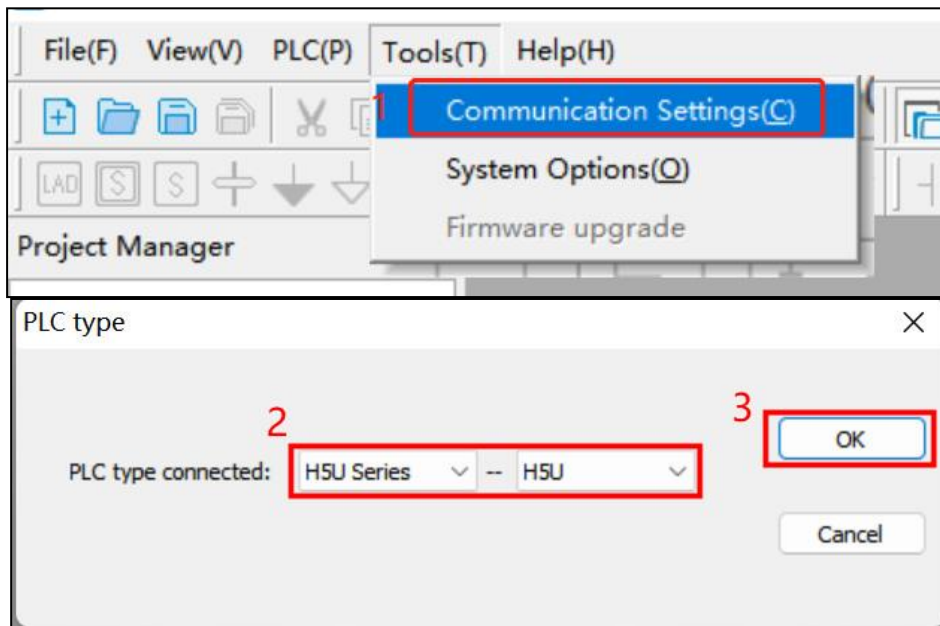
- (1) Variables - External Variables Select the PLC where the variable is to be created.
- (2) Click Add on the right side and create according to the desired data type.
- (3) Information filtering view, can be filtered by each data screening above.



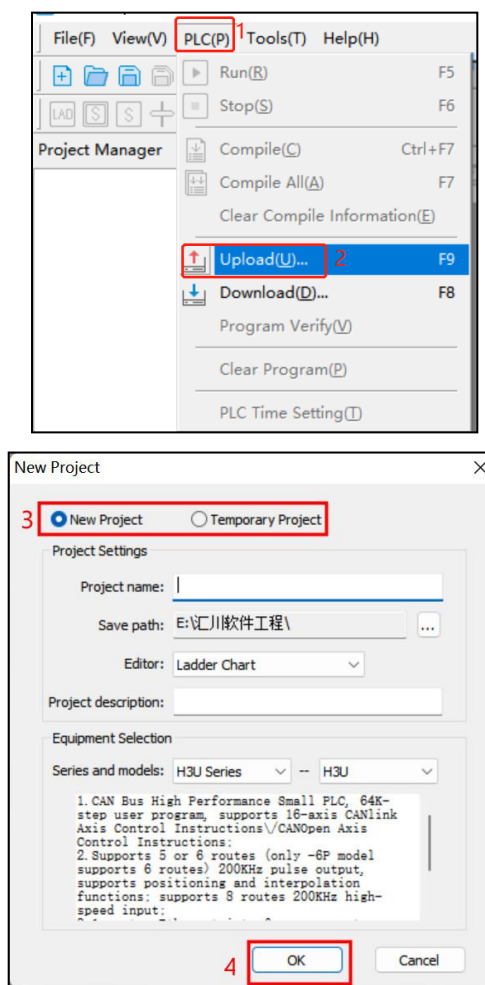
### ❖ 3 External Controller Configuration

The AutoShop software version used in this manual is AutoShop V4.2.0.0, and the PLC model is H3U-1616MT-XP.

1. Open Auto Shop software, click "Tools" --> "Communication Settings", select plc type for H3U series, click OK, and then click "Test" after selecting a PC and PLC connection method. "Test". This step is used to test whether the communication is successful:

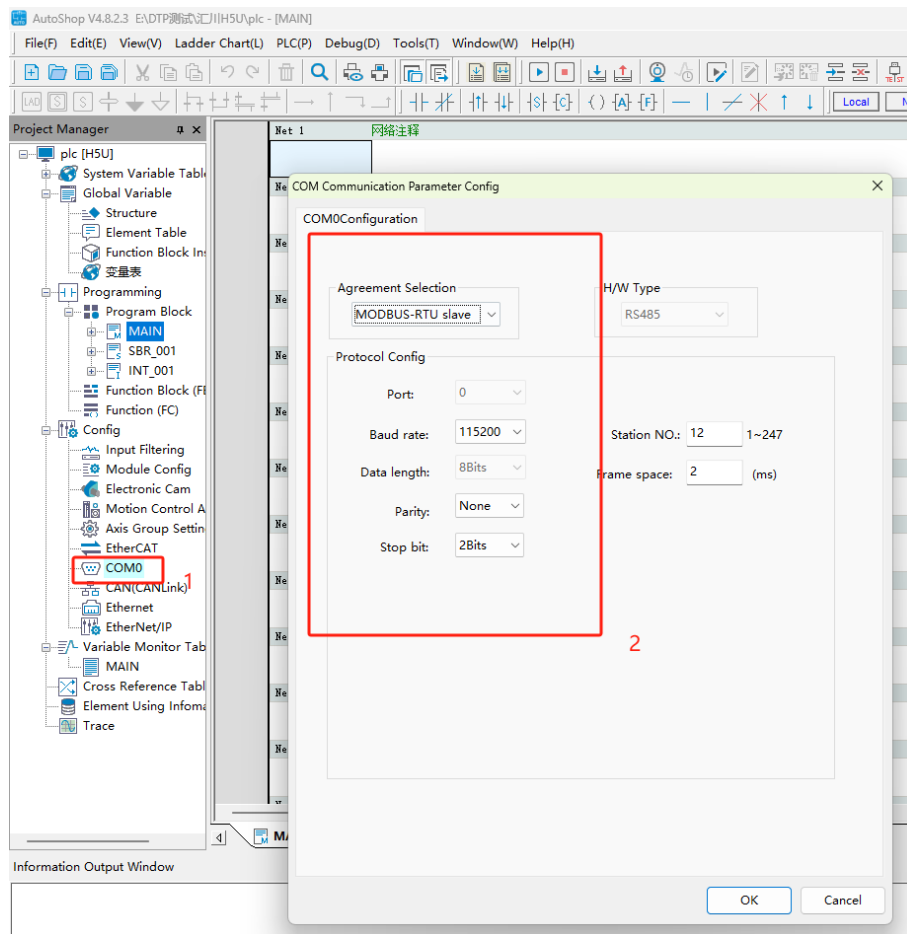


2. Click "PLC", select "Upload", the upload project window will pop up, you can choose to create a new project or temporary project, if the new project, you need to fill in the custom project name, click "OK ". Finish plc reading.



3. Double click "COM0" to enter the serial port settings, in this window you can view the

protocol selection and protocol config, click "OK" and download to the PLC to take effect.



## ❖ 4 Supported Register Types

Device	Bit Address	Word Address	Format	Notes
External input node	X 0-1777	-----	O000	
External output nodes	Y 0-1777	-----	O000	
Internal auxiliary nodes	M 0-7999	-----	DDDD	
Status Register	S 0-4095	-----	DDDD	
	B 0-32767	-----	DDDDD	
Data Register	-----	D 0-7999	DDDD	
File Register	-----	R 0-32767	DDDDD	

## ❖ 5 Advanced parameters and error messages

Reference Manual - Communication "Advanced Parameters" and "Error Messages Table"