



# **K**inco PLC Series

## Directory

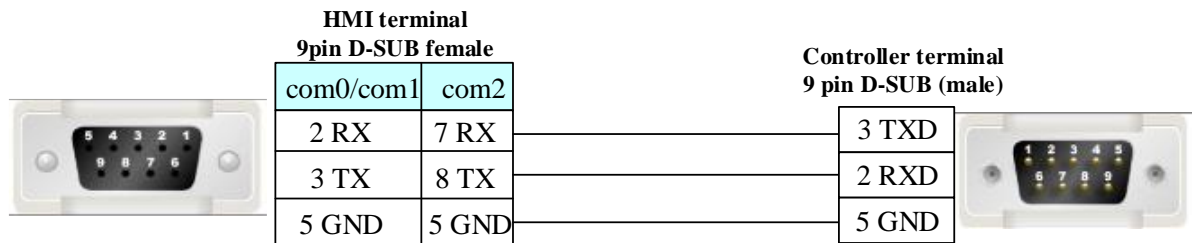
❖ 1 Introduction to Drive .....	2
❖ 2 HMI Configuration .....	3
❖ 3 External Controller Configuration .....	6
❖ 4 Supported Register Types .....	6
❖ 5 Advanced parameters and error messages .....	7

## ❖ 1 Introduction to Drive

Driver protocol	Kinco PLC Series
PLC Model number	K2/ K3/ K5/ K6/ KW/ KS Series
Means of communication	Serial port
PLC interface	RS232/RS485
Serial port parameters	Baud rate 9600, data bit 8, no parity, stop bit 1
On line simulation	support
Website	<a href="https://www.kinco.cn">https://www.kinco.cn</a>

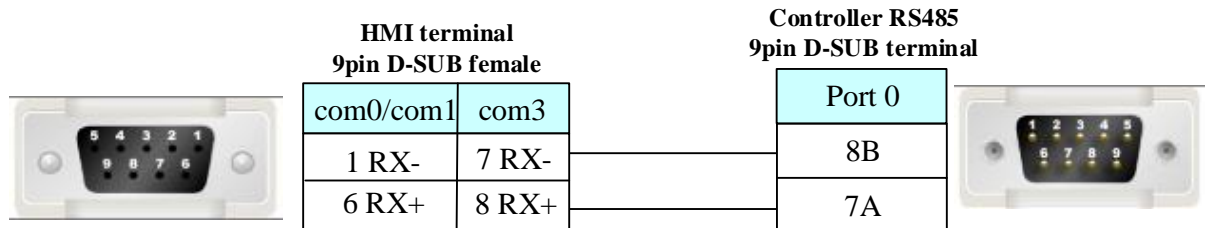
Hardware wiring method:

### RS232 communication cable



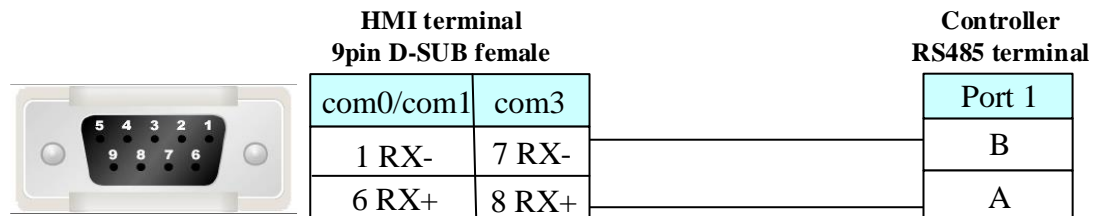
### CPU304/CPU304EX/CPU306

#### RS485 communication cable



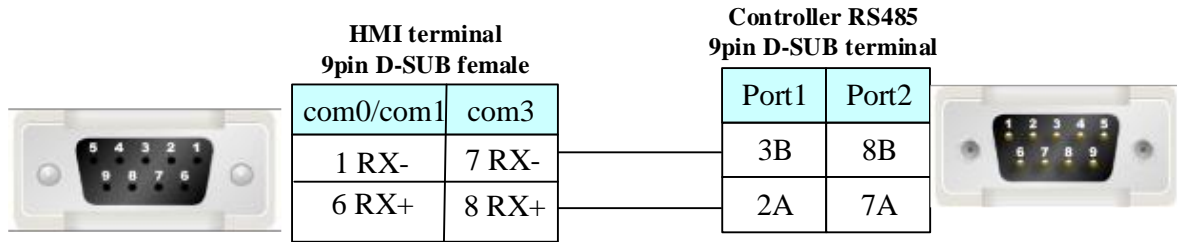
### CPU306EX /308/504/KS Series

#### RS485 communication cable



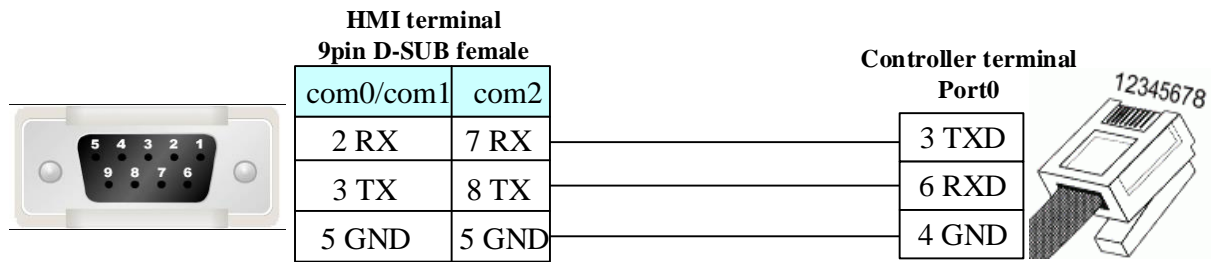
### CPU506EA

#### RS485 communication cable



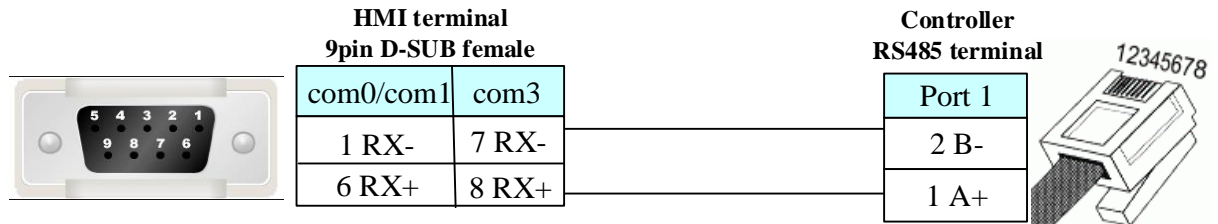
## KW/KS Series

### RS232 communication cable



## KW Series

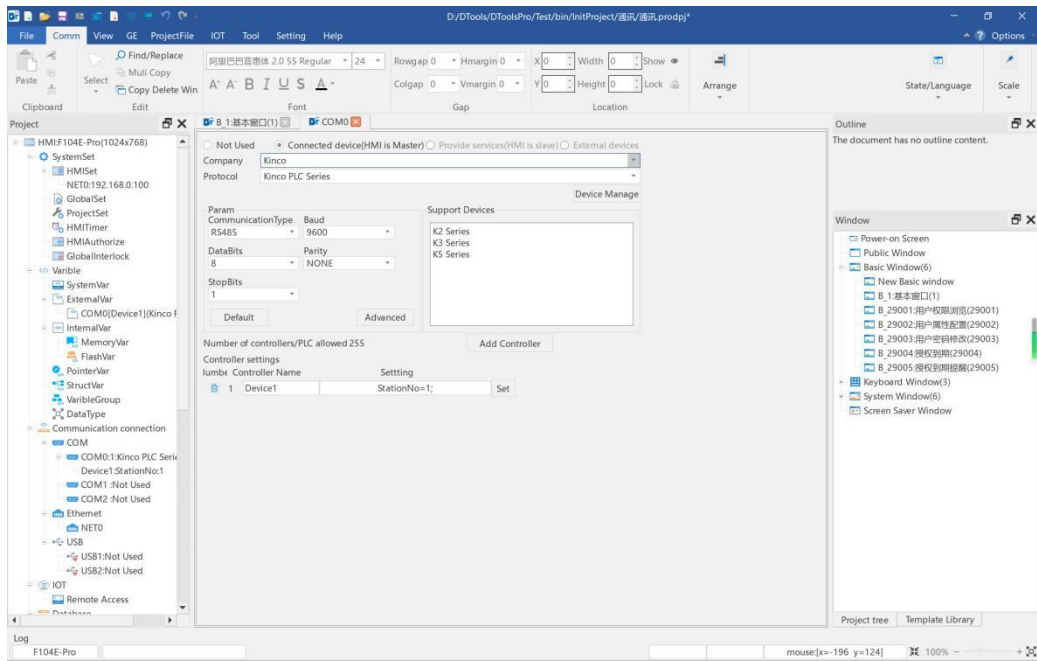
### RS485 communication cable



## ❖ 2 HMI Configuration

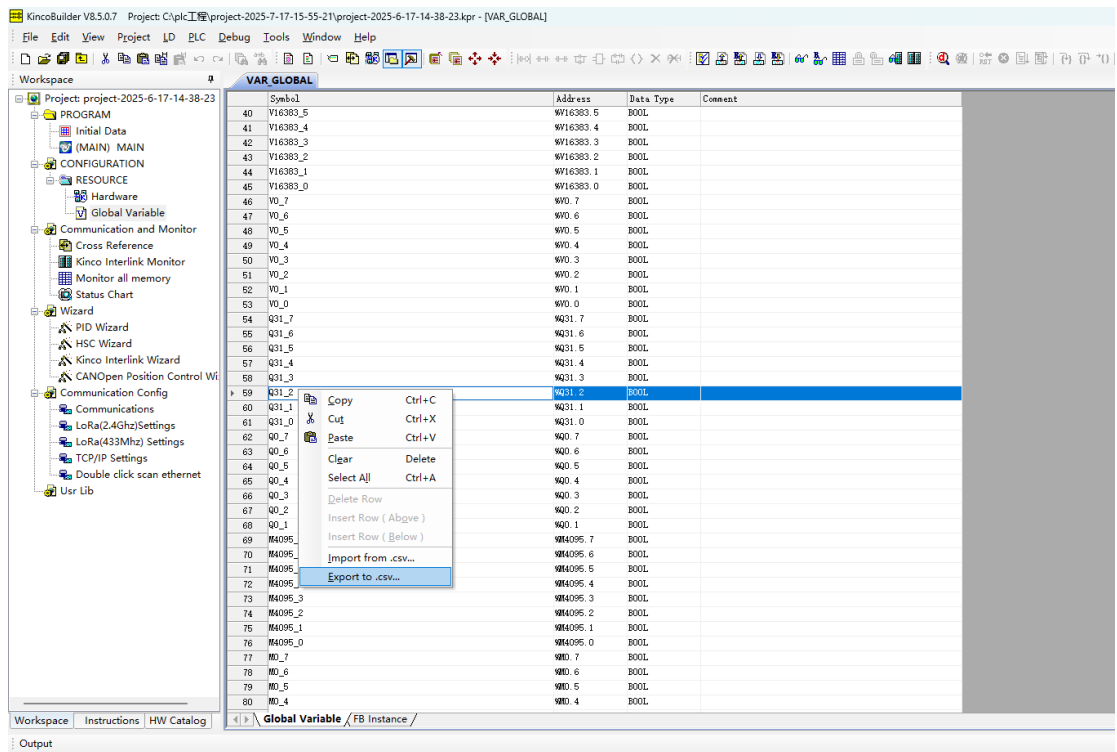
### ➤ Configuring communication connections

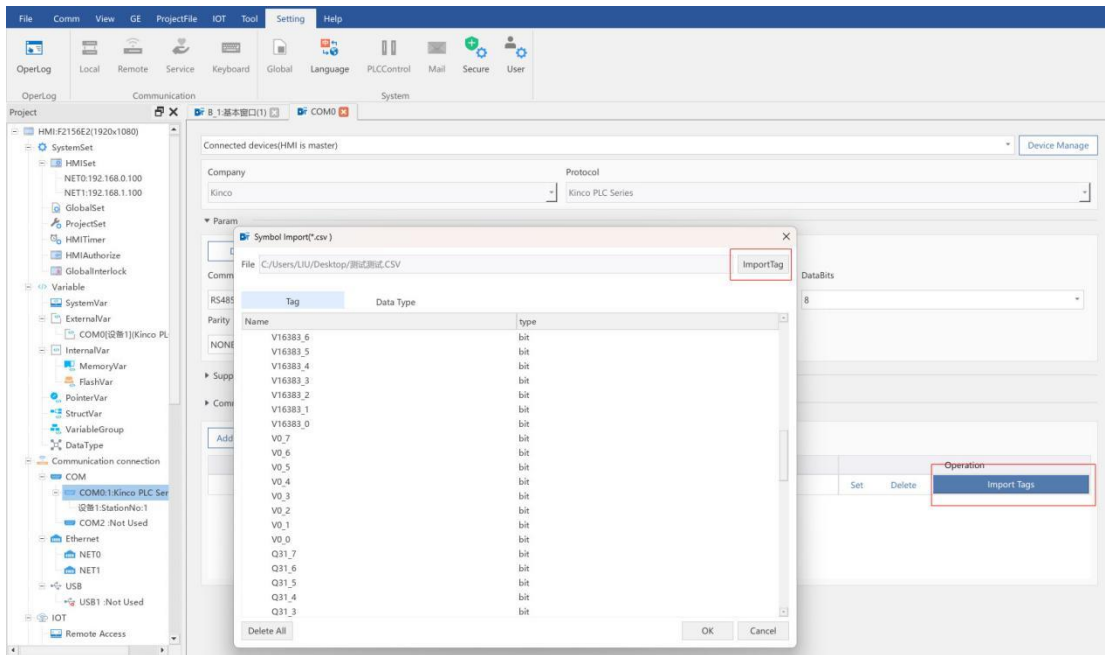
The company that the manufacturer selects Kinco, the protocol selects Kinco PLC Series, the communication mode selects RS232 or RS485 according to the demand, other parameters as shown below are the default values can be modified without, advanced parameters inside the advanced is generally not recommended to make changes



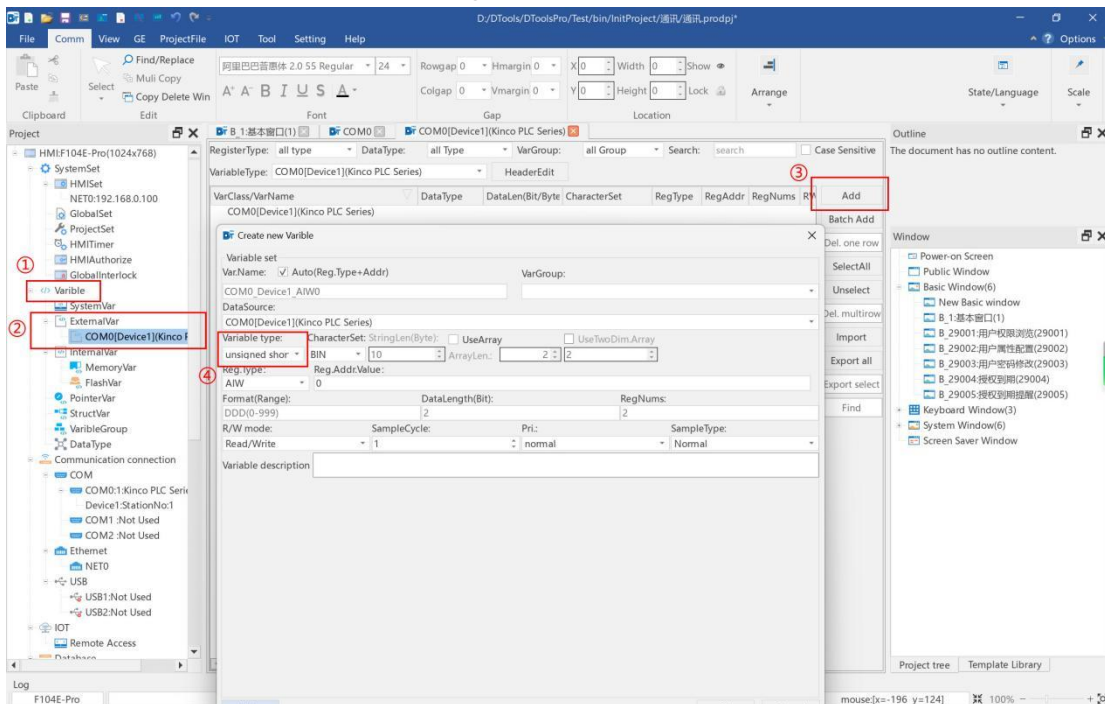
### ➤ Create Variable

Variables created in the PLC program can be imported. Note that if the variable name is illegal (i.e. not supported in the PLC software), the import fails!

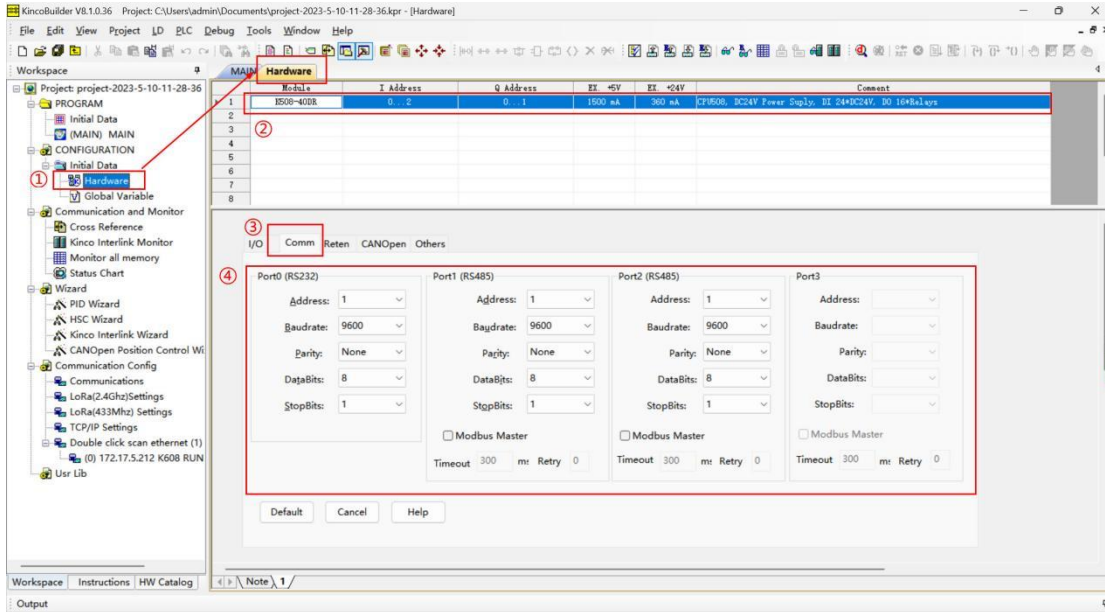




Double-click COM0 in the variables, click Add, select different data types according to your needs and then add them, if you need to create a large number of variables of the same data type, you can choose the batch creation shortcut to generate.



### ❖ 3 External Controller Configuration



- (1) In the Project Manager, double click on "Hardware"
- (2) In the window that opens, you can view the corresponding hardware information and click on the module that needs to be set up for communication
- (3) Select "Communication Settings" and the settings for each port will appear below
- (4) Select the port you want to communicate with and set the corresponding communication parameters (need to be consistent with the parameters set by the HMI), just download it to the PLC after OK.

### ❖ 4 Supported Register Types

Support M, I, Q,V, VW, AIW, AQW, VB, VD, VR, ERR

Device	Bit Address	Word Address	Format	Notes
System internal/external input nodes	I0.0-124.7	-----	DDD.O	
System internal/external output nodes	Q0.0-124.7	-----	DDD.O	
Intermediate auxiliary register	M0.0-4095.7	-----	DDDD.O	
Intermediate register	V0.0-16383.7	-----	DDDDD.O	
Analog input register	-----	AIW 0-999	DDD	
Analog output register	-----	AQW 0-999	DDD	
Intermediate register	-----	VW 0-16383	DDDDD	16-bit
Intermediate register	-----	VB 0-16383	DDDDD	8-bit
Intermediate register	-----	VD 0-16383	DDDDD	32-bit
Intermediate register (floating		VR 0-16383	DDDDD	32-bit

point)				
ERR	-----	ERR 0-127*1 ERR 128-255*2 ERR 256-383*3 ERR 384-511*4	DDD	

- 
- 1) AIW, AQW, VW, VD must be an even number;
  - 2) AIW can only be read but not written.
  - 3) VR single-precision floating-point number in PLC corresponds to VD of HMI (single-precision floating-point number is selected for data type).

\*1 ERR 0~127 means 128 common errors occurred recently. ERR0 is the latest error, ERR1 is the next newest error, and so on

Notice

\*2 ERR 128~255 indicates the 128 most recent serious errors. ERR128 is the latest error, ERR129 is the next newest error, and so on

\*3 ERR 256~383 indicates the last PLC power up, the last 128 common errors occurred. ERR256 is the last error, ERR257 is the next after error, and so on

\*4 ERR 384~511 indicates the last PLC power up, the last 128 serious errors occurred. err384 is the last error, err385 is the next later error, and so on

---

## ❖ 5 Advanced parameters and error messages

Reference Manual - Communication Advanced Parameters and Error Information Table