

OPC UA

OPC UA Client

Directory

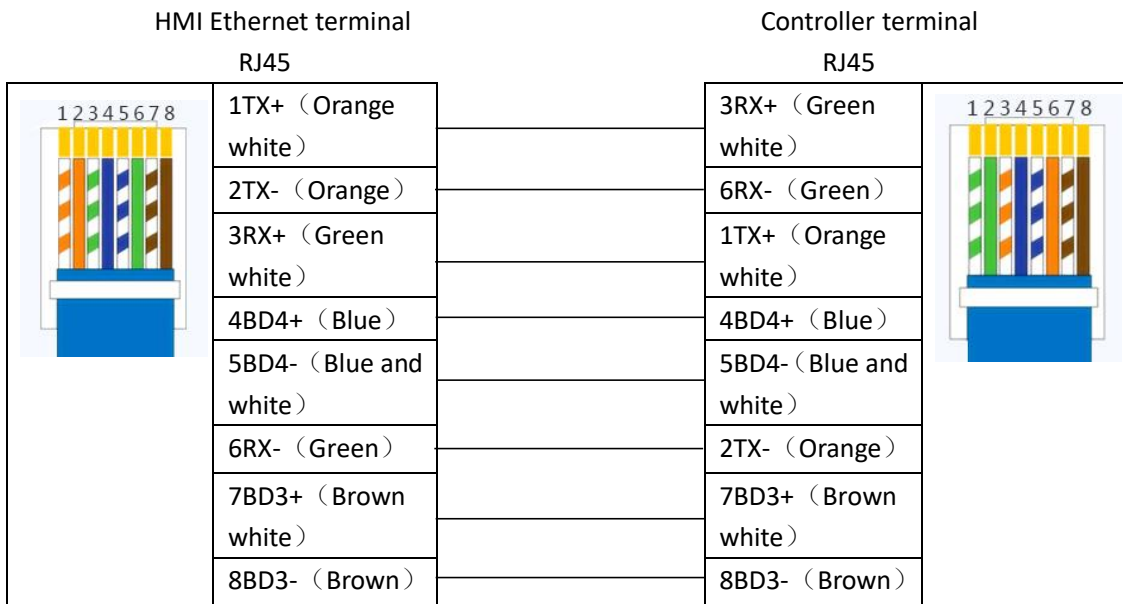
OPC UA	1
❖ 1 Drive the introduction	2
❖ 2 HMI configure.....	3
❖ 3 External controller configuration	5

❖ 1 Drive the introduction

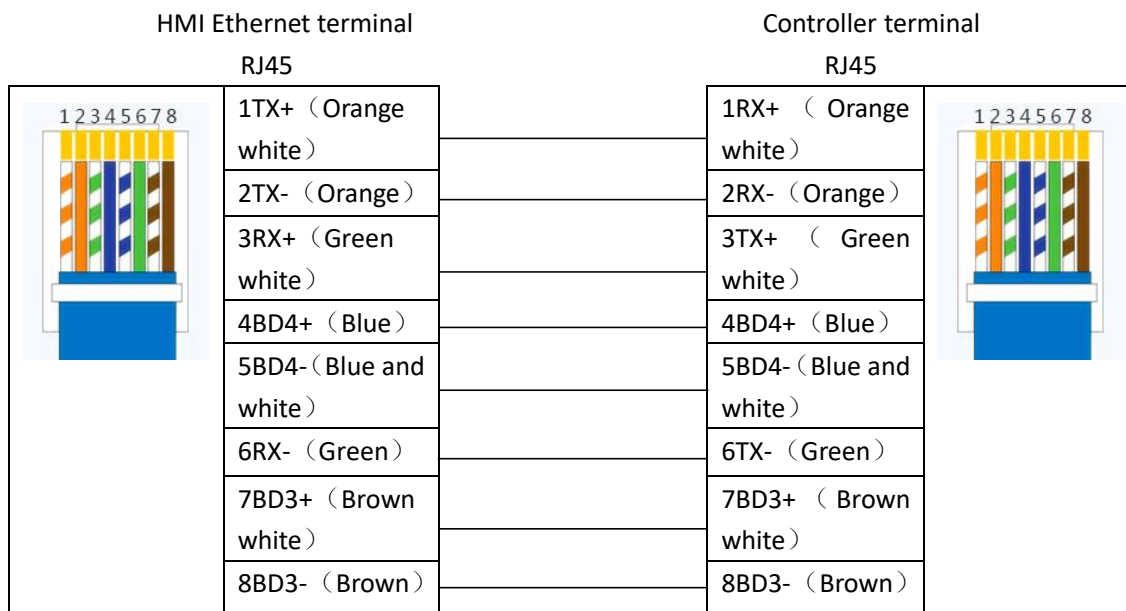
Drive the protocol	OPC UA Client
communication mode	Data transmission communication through OPC UA client driver (OPC UA Client) and OPC UA server (OPC UA Server) communication connection
PLC joggle	Ethernet
Online simulation	Support

Hardware wiring mode: If PLC does not communicate directly with HMI without HUB or SWITCH, if communicating with HUB or HMI with SWITCH, direct connection or cross network cable can be used.

A. Cross-over network wire wiring diagram

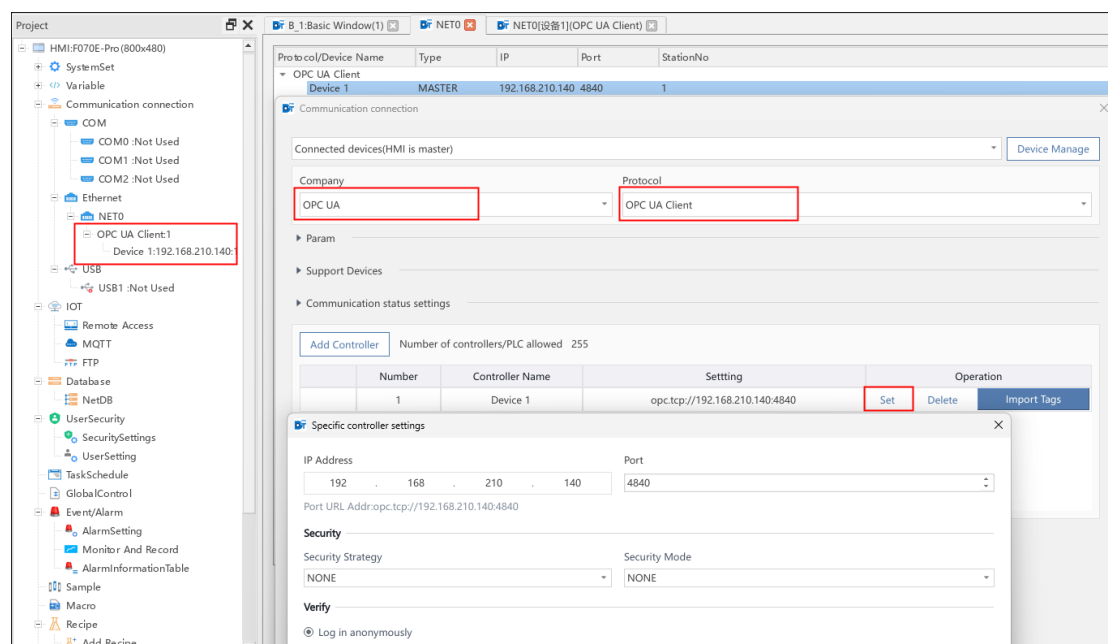


B.Direct connection to the network wire wiring diagram

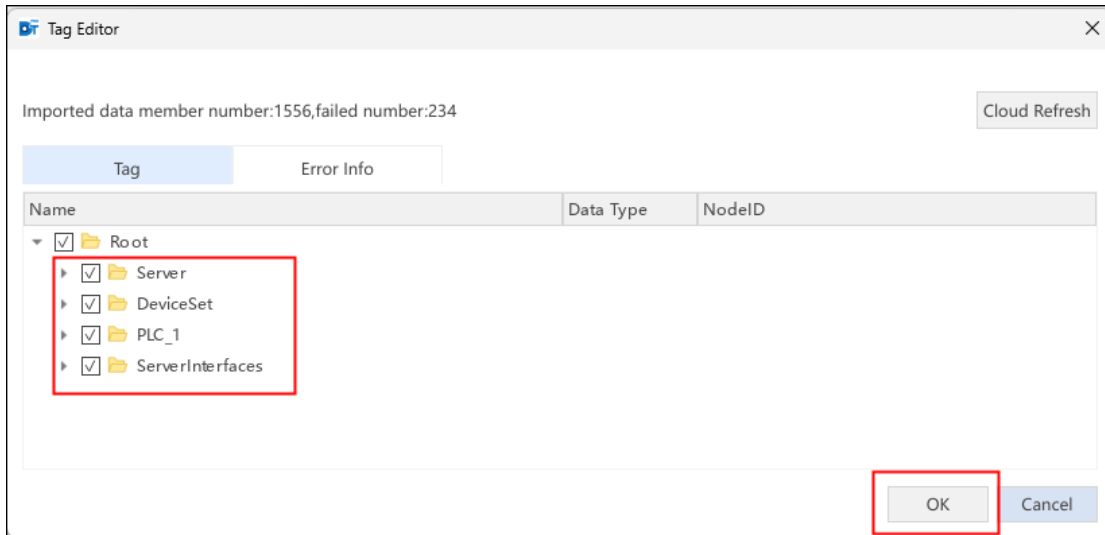
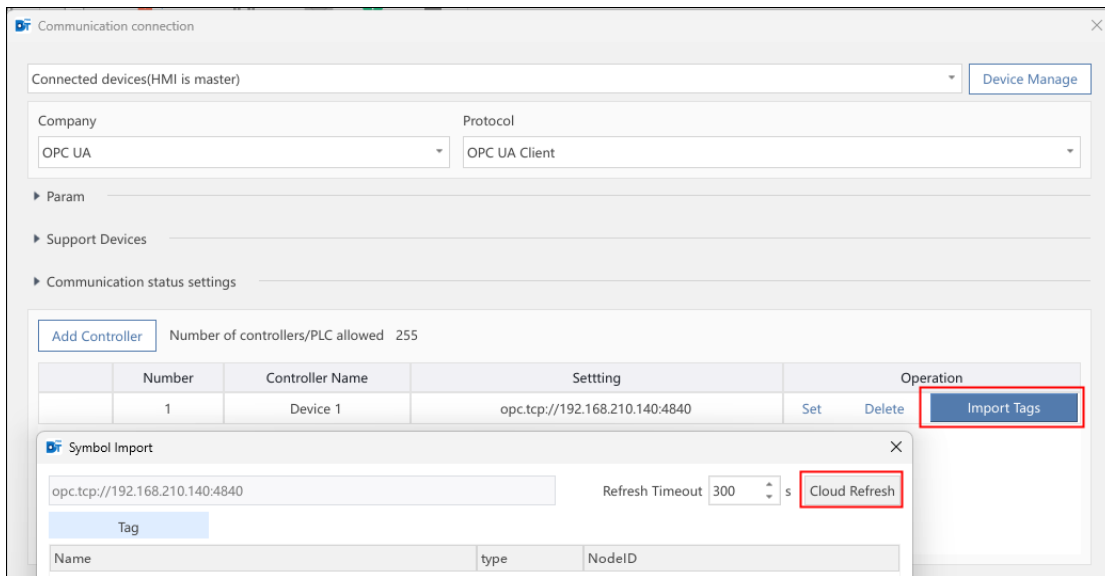


❖ 2 HMI configure

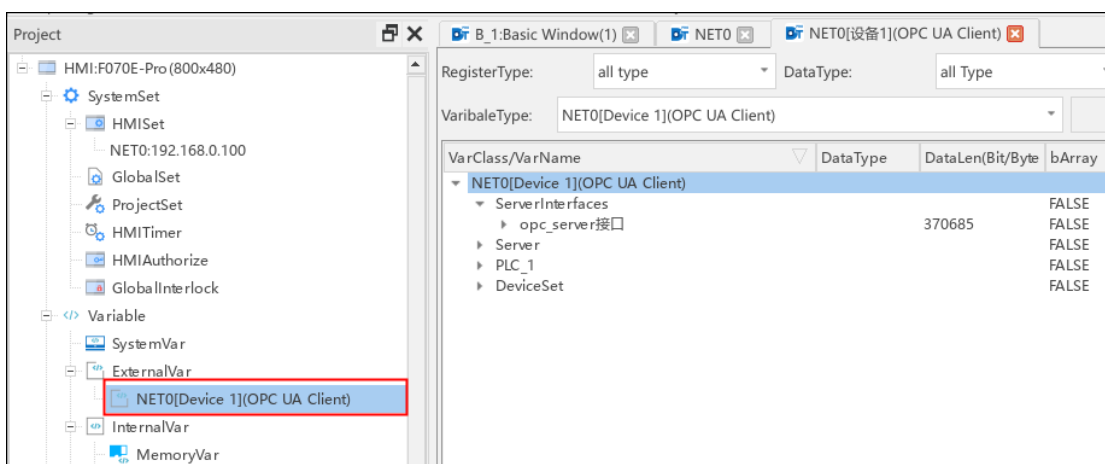
➤ Configuring driver protocols



➤ Import tag variables



The selected nodes will be synchronized to external variables



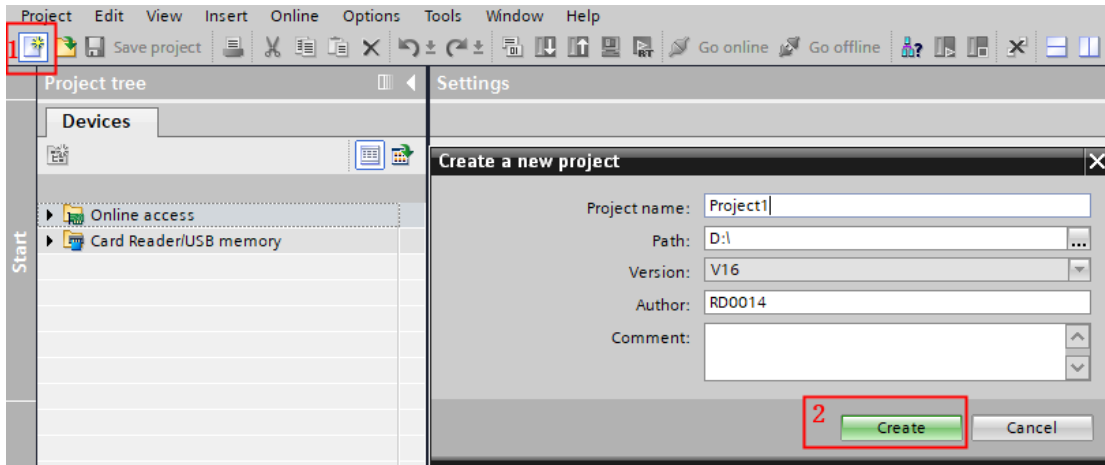
The PLC parameter configuration

IP address	The IP address of the opcua server
port number	opcua Server access port
security policy	Support for Basic256

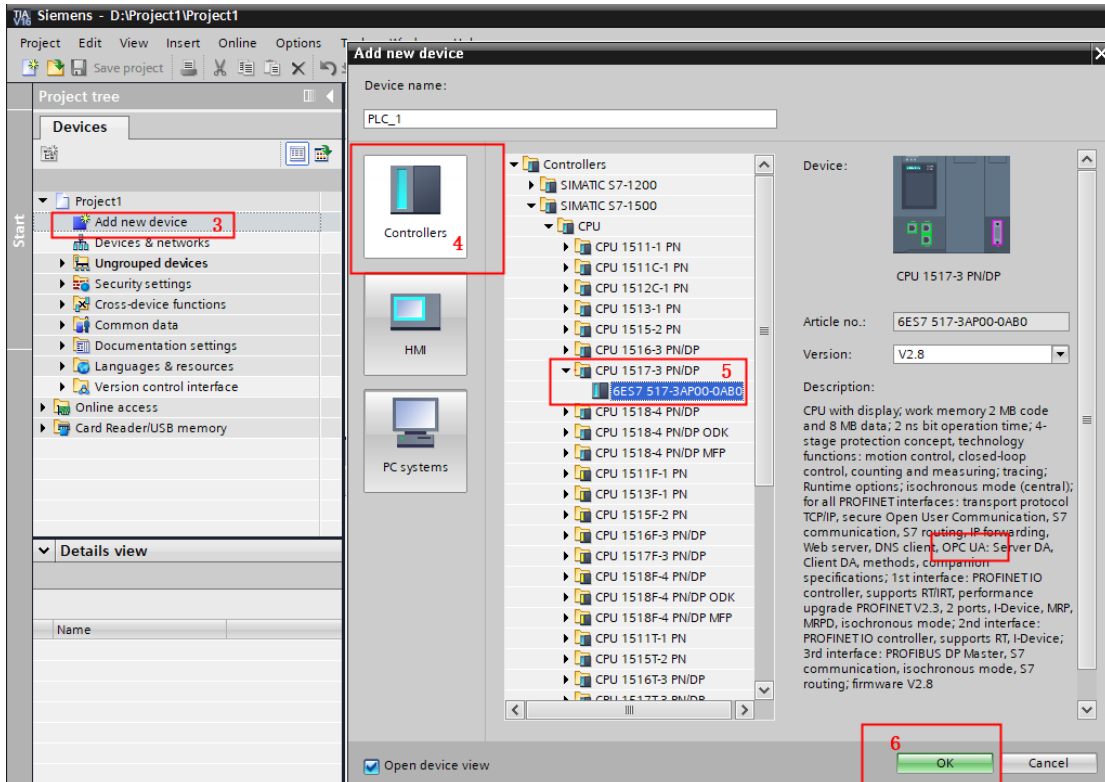
security mode	Support for Signature,Signature & Encryption
Anonymous login	No security verification is required
Username / password	Not support in Kinco DtoolsPro V 1.7.3

❖ 3 External controller configuration

This manual server setup tutorial with Siemens TIA Portal as reference.



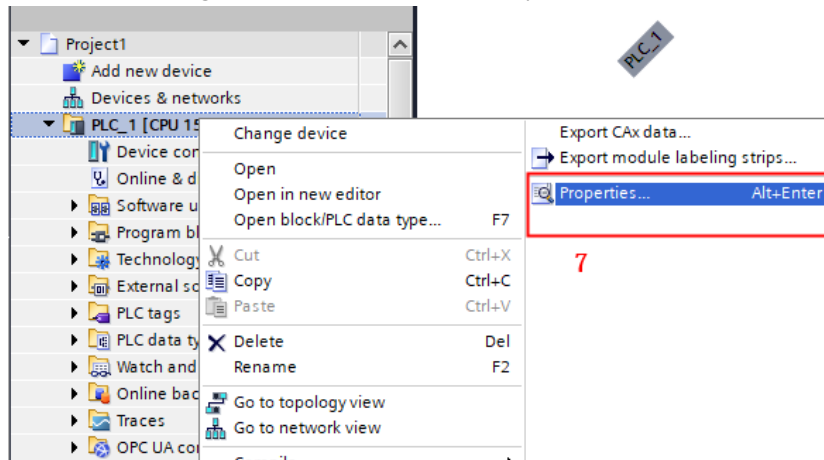
- (1) New projects;
- (2) Set the name, path, click Create;



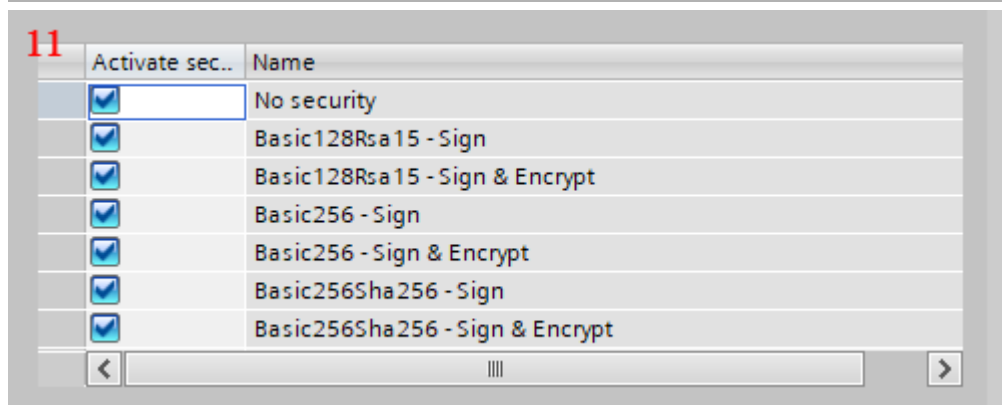
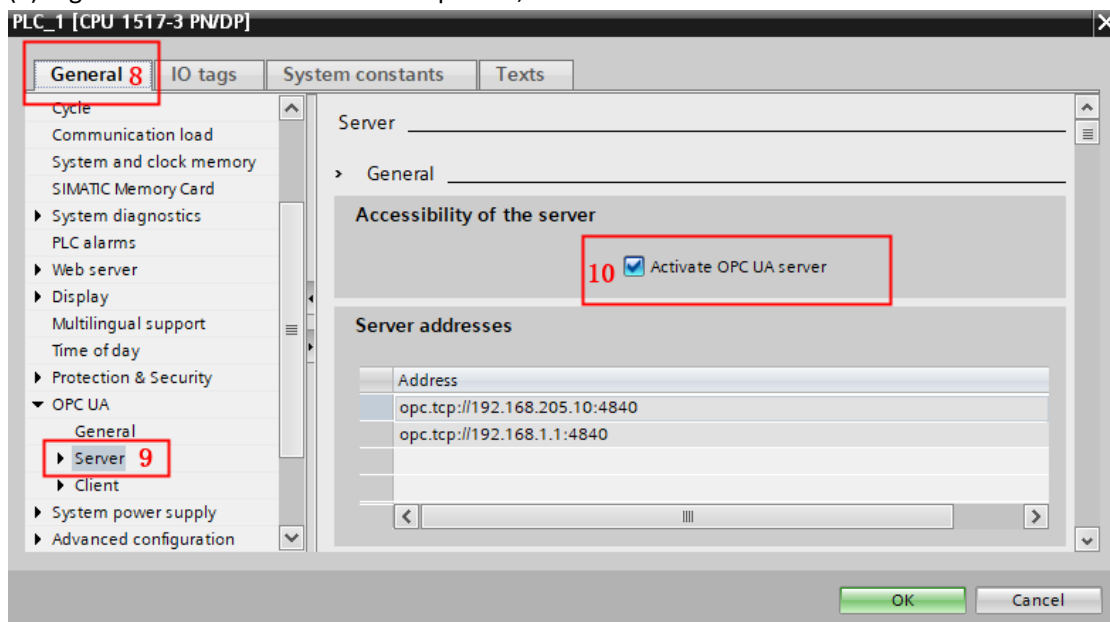
- (3) Click Add new Device;
- (4) selection controllers;

(5) Select a controller with a OPC UA (available in the device description), or the CPU1517-3 PN / PD;

(6) After selecting, click OK, the device is complete;



(7) Right-click the device and click Properties;



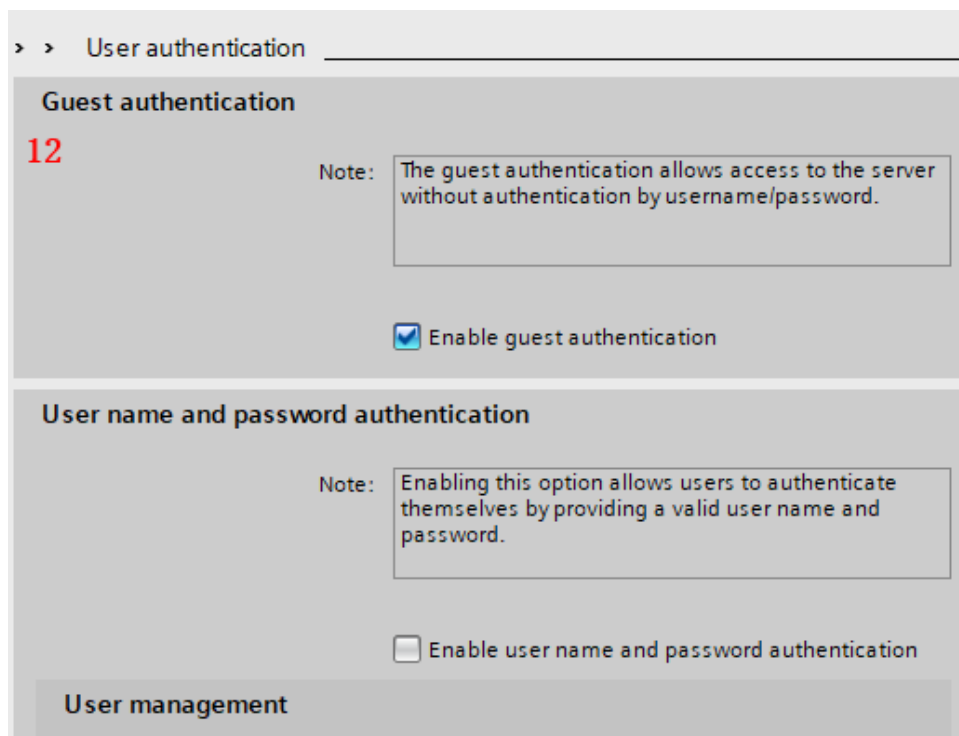
(8) Open the general options;

(9) Select the OPCUA client;

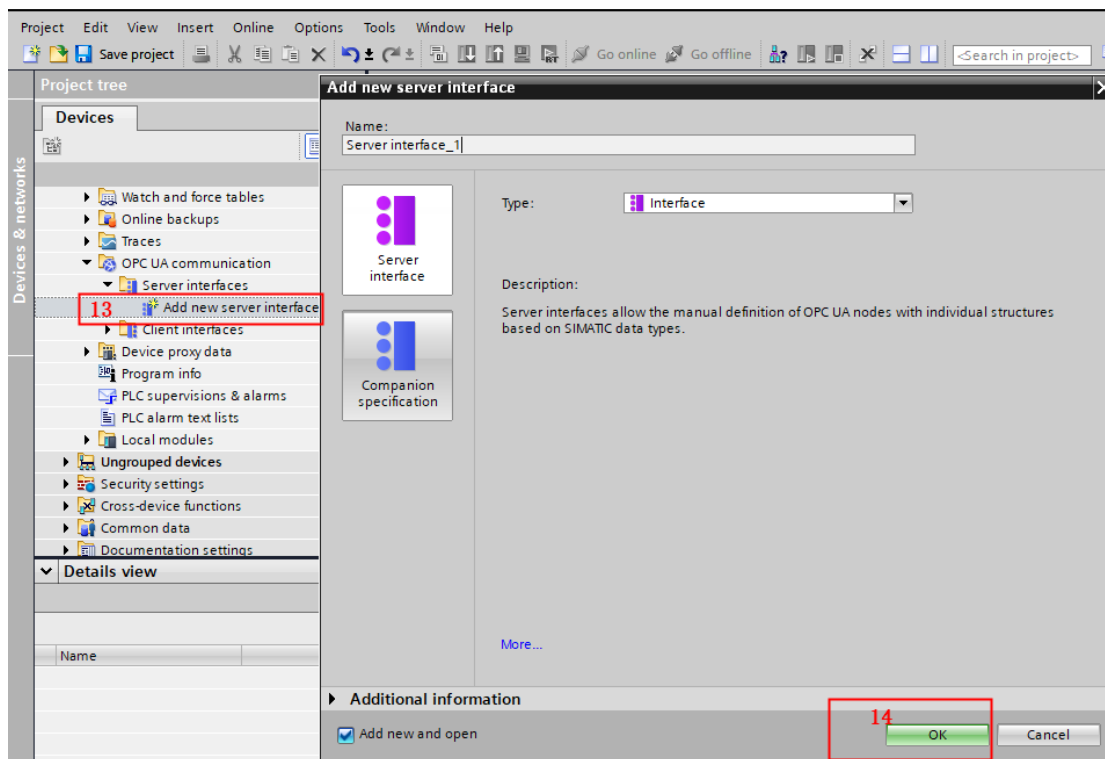
(10) Check and activate the OPUA server to see the server address;

(11) With the page scroll down, configure the server security policy, select the security policy

supported by the server, can be configured according to the actual requirements;

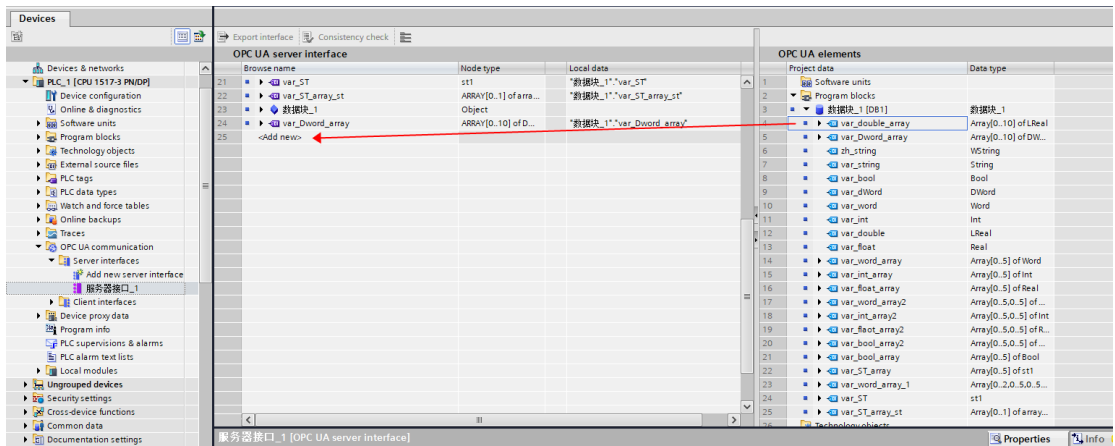


(12) Configure server identity authentication, enable access customer authentication is anonymous online. User and password authentication can also be enabled according to the actual situation;



(13) New server interface, select the server interface, set the name;

(14) Click OK to complete the new project;



(15) Add data variables that need OPC UA communication, open the OPCUA server interface, select the variable from the right table to the left "<Add new>", that is, add successfully, you can press shift to select multiple variables;

(16) After compiling and downloading the PLC project, you can open the UaExpert tool to check whether the UA server is configured.

