



XINJE XD Series(MODBUS-TCP)

Directory

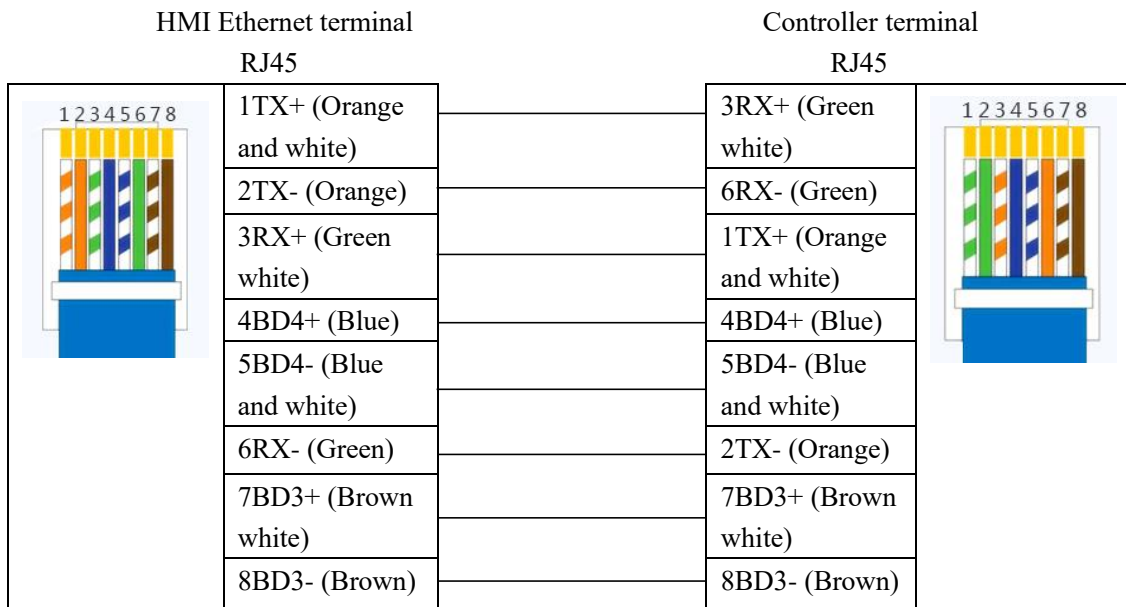
XINJE	1
1 Introduction to Drive.....	2
2 HMI configure	3
3 External controller configuration	4
4 Supported register type	5
5 Advanced parameters and error messages.....	6
6 Software Configuration.....	6

❖ 1 Introduction to Drive

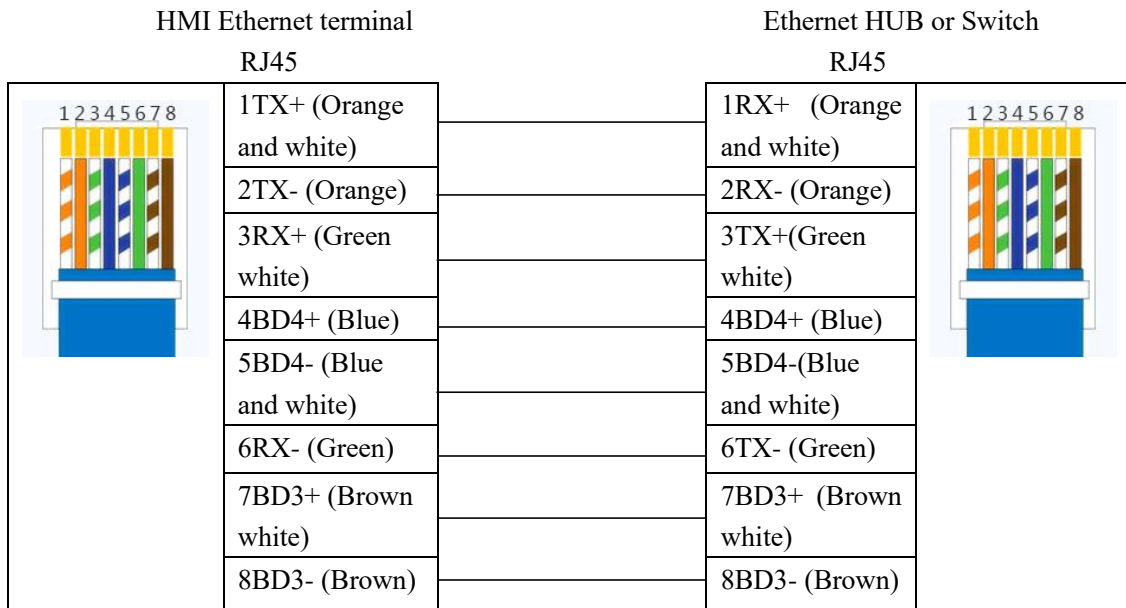
Driver protocol	XINJE_XINJE XD Series(MODBUS-TCP)
PLC Model number	XD5/XDM/XDC/XD5E/XDME/XL5/XL5E/XLME Series
website	http://www.xinje.com/index.html
communication mode	Ethernet
PLC interface	Ethernet
PLC port number	502
Online simulation	Support

Hardware wiring method: If PLC communicates directly with HMI without HUB or SWITCH, crossover cable is used; If the network communicates with the HMI through the HUB or SWITCH, use either a direct connection or a crossover cable.

A. Crossover cable wiring diagram



B. Wiring diagram of the direct cable



❖ 2 HMI configure

➤ Configure communication connections

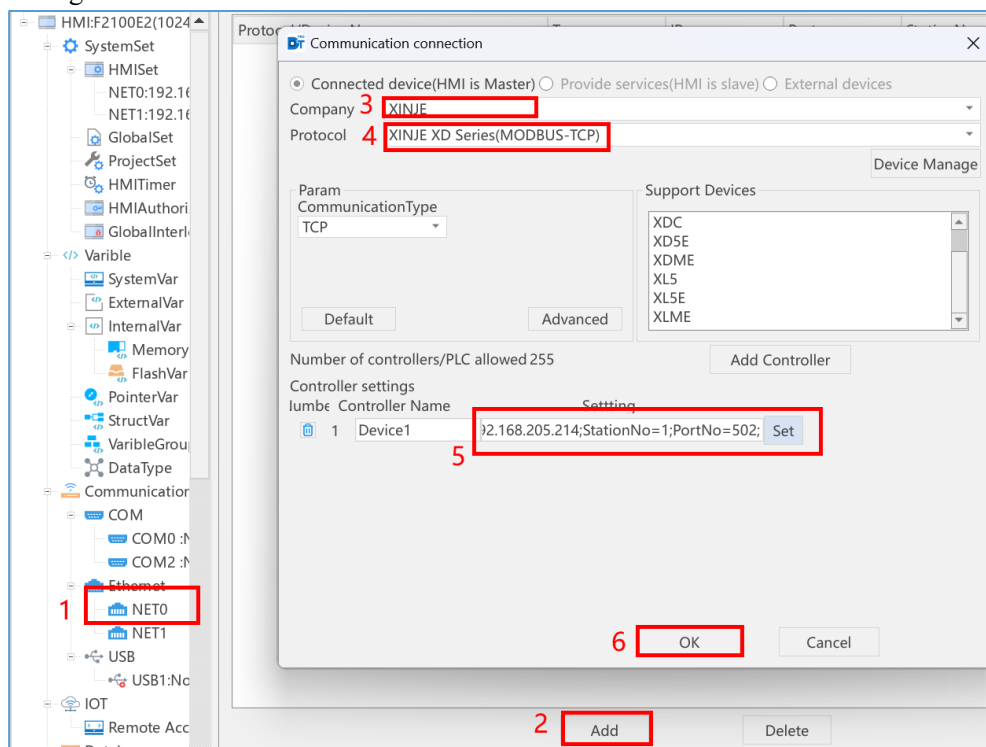


Figure 1

- (1)Project - Ethernet: Select the network port to which you want to add a driver
- (2)New connection
- (3)Select the external controller of the company brand XINJE

- (4) Select the XINJE XD Series (MODBUS-TCP) protocol
- (5) Configure the controller name and IP / station number / port number- - **be consistent with the parameters of the actual controller**
- (6) Click OK to complete the configuration of the communication connection

➤ Create Variable

- (1) Variable - ExternalVar Select the PLC where the variable is to be created
- (2) Click Add on the right to create according to the desired data type
- (1) Information filtering view, can be filtered by each data screening above

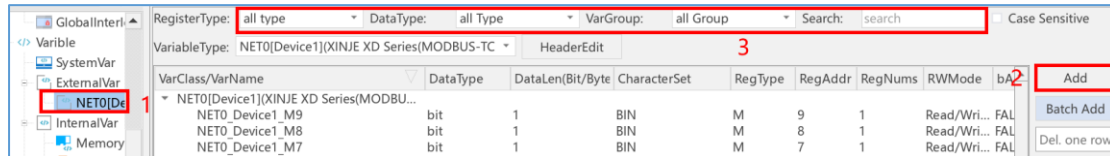


Figure 2

❖ 3 External controller configuration

The XNetConfig Tool software and the PLC programming tool software are used in this manual.

1. Open the mail XNetConfig Tool element and select "PLC";

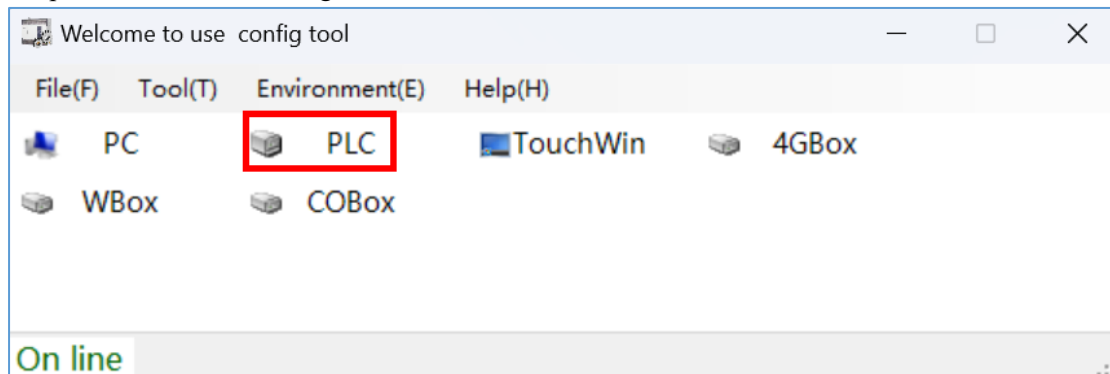


Figure 3

2. configure PLC:

- 1) In the connection mode, "Interface" selects "Ethernet", and "Protocol" selects "Modbus";
- 2) Fill in the IP of the PLC at the device IP, click "Connecting", and if the connection is successful, it will automatically enter the device information display interface;
- 3) Click "Scan" to scan to the connected PLC, and double-click the scanned device to fill in the IP for connection;

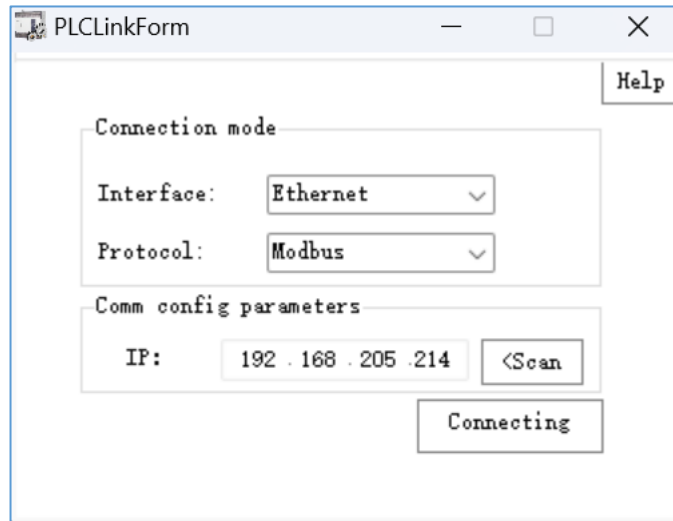


Figure 4

3. finally open the Sentry PLC programming tool software, click on the communication parameters configuration, you can directly use the specified address, enter the IP address set in the previous configuration, click the OK button can be;

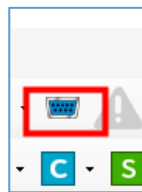


Figure 5

4. PLC programming tool software can also modify the PLC configuration, select "PLC Configuration - Ethernet Port" on the left side of the interface, modify the IP and click "Write to PLC" to take effect;

❖ 4 Supported register type

Device	Bit address	Word address	Format	
Internal relay node	M 0-20479	----	DDDDD	
Input relay node	X 0-77	----	OO	
Input relay node	X1 0-1777	----	OOOO	
Input relay node	X2 0-177	----	OOO	
Input relay node	X3 0-77	----	OO	
Output relay node	Y 0-77	----	OO	
Output relay node	Y1 0-1777	----	OOOO	
Output relay node	Y2 0-177	----	OOO	
Output relay node	Y3 0-77	----	OO	
State node	S 0-7999	----	DDDD	
HSC register	HSC 0-39	----	DD	

Timer node	T 0-4095	----	DDDD	
Counter node	C 0-4095	----	DDDD	
HC register	HC 0-1023	----	DDDD	
HT register	HT 0-1023	----	DDDD	
HS register	HS 0-999	----	DDD	
SEM register	SEM 0-127	----	DDD	
ET register	ET 0-39	----	DD	
SM register	SM 0-4095	----	DDDD	
HM register	HM 0-6143	----	DDDD	
Data register	----	D 0-20479	DDDDD	
Timer	----	TD 0-4095	DDDD	
Counter	----	CD 0-4095	DDDD	
Flash ROM register	----	FD 0-8191	DDDD	
Input register	----	ID 0-99	DD	
Input register	----	ID1 0-1599	DDDD	
Input register	----	ID2 0-199	DDD	
Input register	----	ID3 0-99	DD	
Output register	----	QD 0-99	DD	
Output register	----	QD1 0-1599	DDDD	
Output register	----	QD2 0-199	DDD	
Output register	----	QD3 0-99	DD	
FS register	----	FS 0-47	DD	
SFD register	----	SFD 0-4095	DDDD	
HSCD register	----	HSCD 0-39	DD	
HCD register	----	HCD 0-1023	DDDD	
HTD register	----	HTD 0-1023	DDDD	
HSD register	----	HSD 0-1023	DDDD	
HD register	----	HD 0-6143	DDDD	
ETD register	----	ETD 0-39	DD	
SD register	----	SD 0-4095	DDDD	

❖ 5 Advanced parameters and error messages

Reference Manual - Communication Advanced Parameters and Error Information Table

❖ 6 Software Configuration

The following steps use the associated word variable as an example:

1. Click on "Components" and select "Data Display - Value Entry";

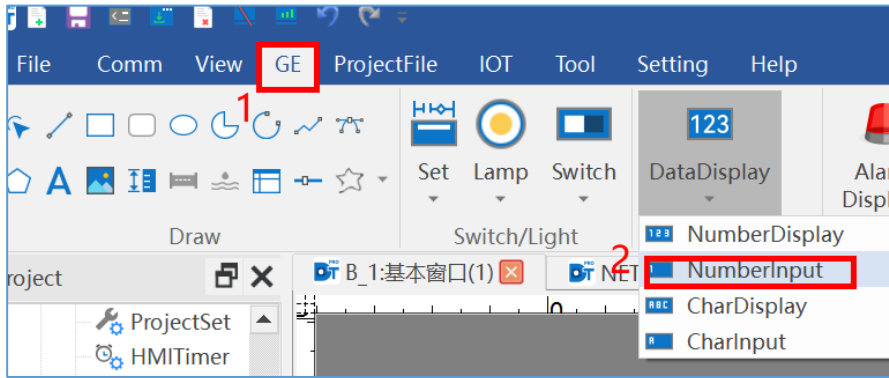


Figure 6

2.Numeric input element associated variables;

(1)You can click the variable edit box to enter characters. A list of all variables matching the string will pop up and the desired external variable can be selected;

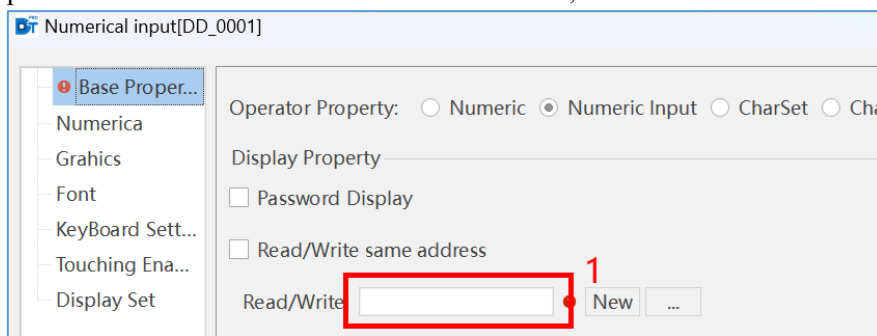


Figure 7

(2)You can click the "New" button to add the required external variables. Select the external variable as the data source, set the required variable information, and confirm the variable edit box to display the newly created variable;

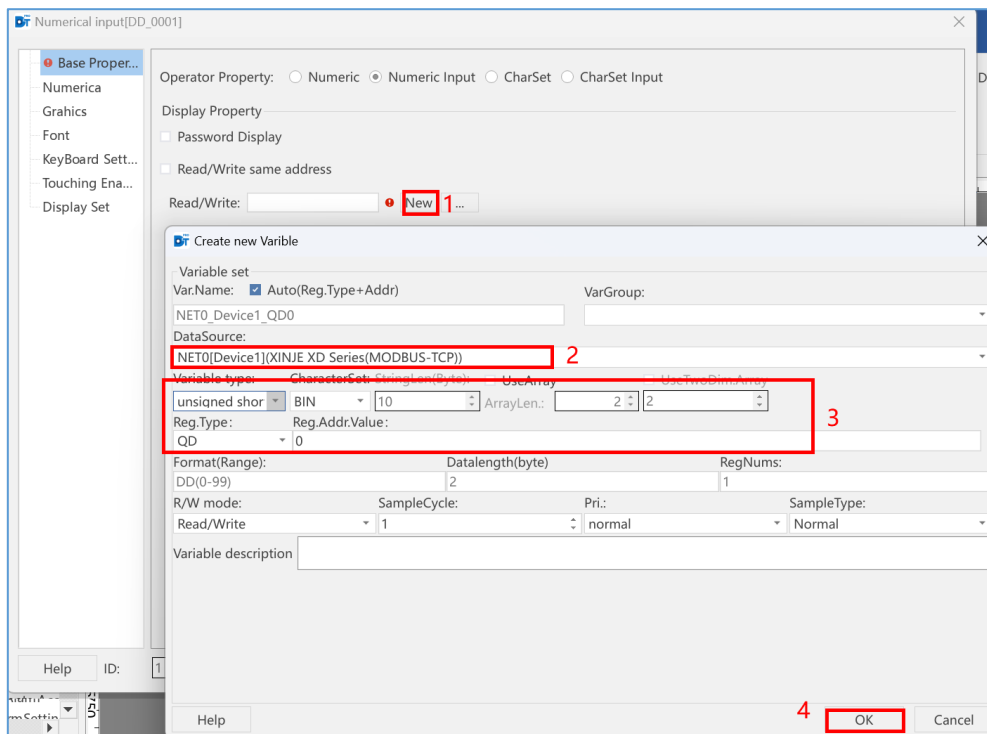


Figure 8

(3) You can click on the "... " button to select a variable or add a new variable. You can select external variables and directly select existing variables or create variables (same as for new variables). The upper right corner allows you to find and filter variables, and array variables can be modified with subscripts, or you can dynamically index the array subscripts with variables;

(4) Click "OK" to complete the operation of the selected variable, or double-click the variable to achieve the "OK" effect;

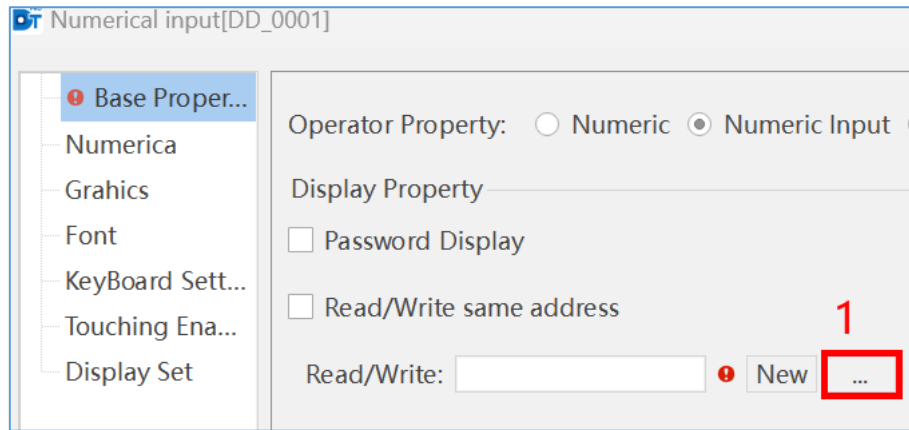


Figure 9

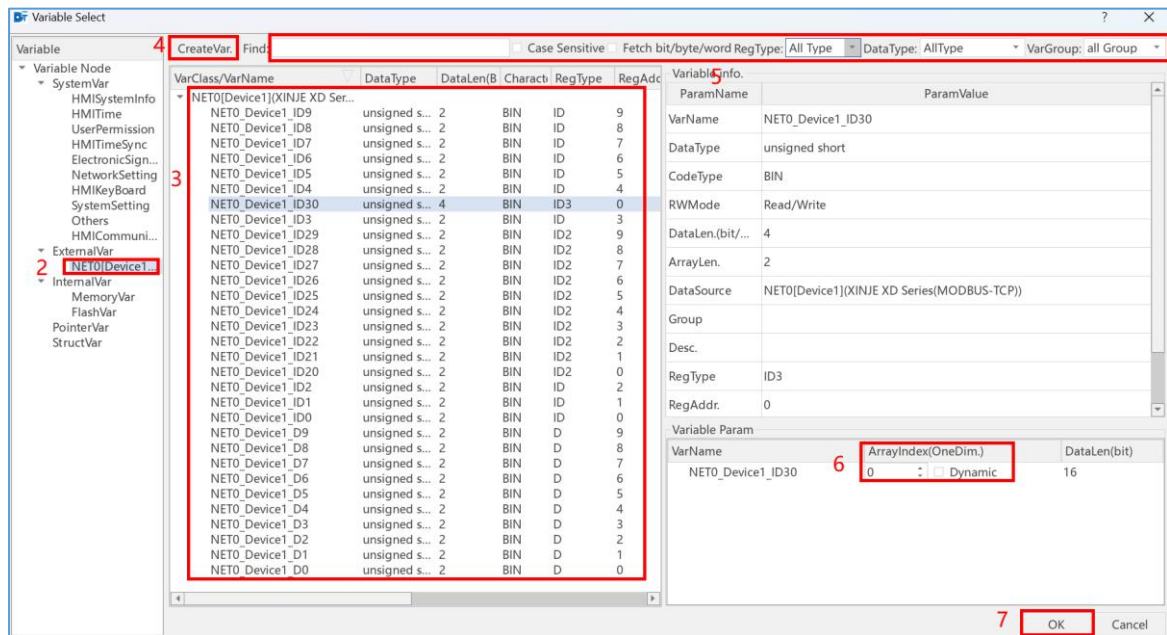


Figure 10

(5) Click "OK" on the component property page to complete the procedure of associating a structural variable with a numeric input component.